



GENERAL CATALOGUE UK

Electrical Enclosures, Cabinets & Data Racks

2026



5 YEAR
Product Warranty



Protection in the toughest conditions™

When critical infrastructure is exposed to damaging rain, abrasive dust, corrosive salty air, or unpredictable temperature swings, IP Enclosures provides protection. Tested to international standards and certified to IP66 IK10, each enclosure is engineered to withstand extreme and dynamically changing weather and environments.

Table of Contents

Wall Mounted Electrical Enclosures	
S1 & S2 Steel Powder Coated	4-9
A 1 Marine Grade Aluminium Powder Coated	10-11
SS1 & SS2 Stainless Steel	12-17
FIBOX ARCA Electrical Enclosures	18-19
Sloping Roof Electrical Enclosures	
SSSR1 Stainless Steel & SSSR1-HD Stainless Steel Heavy Duty	20-21
Accessories (Wall Mounted Electrical Enclosures)	
Transparent Doors & Vented Doors	22
Inner Doors & DIN Rail Kits	23
Rain Hoods & Shelf Kits	24
Mounting Brackets & Stands, Earth Kits, 19" Rails, Plan Pockets	25
Floor Standing Electrical Cabinets	
MF1S Steel Powder Coated	26-27
MF1SS Stainless Steel	28-29
MF1S & MF1SS Dimension Table	30-31
Accessories (Floor Standing Electrical Enclosures)	
Inner Doors	32
Shelf Kits	33
Wall Mounted IP66 19" Data Racks	
SDW Steel Powder Coated	34-35
Wall Mounted IP55 Ventilated Data Racks	36-37
SSDW Stainless Steel	38-39
ADW Marine Grade Aluminium	40-41
Floor Mounted IP66 19" Data Racks	
SD Steel Powder Coated	42-43
SSD Stainless Steel	44-45
SD-HD Steel Powder Coated Heavy Duty	46-47
Accessories (19" Data Racks)	48
Data Rack Shelves & Brackets	49
DIN Terminal Rails & Distribution Boards	50
Rack Mounted DIN Rails & Cable Organisers	51
Outdoor Field Cabinets	
FC Steel Powder Coated	52-53
Pole Mounted Infrastructure Field Cabinets	
FC Steel Powder Coated	54-55
FCA Marine Grade Aluminium	56-57
Floor Mounted Infrastructure Field Cabinets	
FC Steel Powder Coated	58-59
FCA Marine Grade Aluminium	60-61
Air-Conditioned Infrastructure Field Cabinets	
FC Steel Powder Coated	62-63
FCA Marine Grade Aluminium	64-65
Accessories (Infrastructure Field Cabinets)	
Shelf Kits & General Accessories	66
Pedestal Bases, Pole-Mount Brackets & Vented Doors	67
Double Wall Aluminium Cabinets	68-69
IP69K Hygienic Electrical Enclosures	70-71
H IP69K Hygienic Electrical Enclosures	72-73
HPB IP69K Hygienic Pushbutton Enclosures	74-75
HTB IP69K Hygienic Terminal Boxes	76-77
IP66-IP67 Pushbutton Enclosures	
SSP IP66-IP67 Stainless Steel	78-79
IP66-IP67 Terminal Boxes	
SST IP66-IP67 Stainless Steel	80-81
Air Conditioners	82-85
Ventilation Fans & Filters	86-90
Heat Exchangers	91
Controllers	92
Heaters	93
Louvre Vents, Vent Hoods & Ventilated Roofs	94
Locking Solutions	95
LED Surface-mounted Luminaires	96
Technical Reference (Colour Chart, IP Ratings)	97

Trusted Worldwide

IP Enclosures is a global specialist in electrical enclosure systems for the protection of automation, control, communication and power equipment.

Our engineering approach combines innovation with precision to create enclosures that perform where others fail, from desert heat to coastal storms and industrial wash-downs.

We operate internationally with logistics and technical support in Australia, New Zealand, the United Kingdom and Europe, supplying enclosures that meet or exceed international standards.

Each product undergoes rigorous testing to verify ingress protection, mechanical impact resistance and long-term corrosion durability.

Our enclosures protect assets used by NASA, Airbus, Boeing, Formula 1® teams, Thames Water, and Network Rail, as well as thousands of industrial and infrastructure customers worldwide.

We partner with industry innovators including FIBOX (Finland), Almatec (Switzerland) and Icotek (Germany) to deliver integrated enclosure, thermal and cable-entry solutions.

We engineer electrical enclosure systems that set the global benchmark for protection, reliability and performance.



Certified to the World's Highest Standards

IP Enclosures products are certified to comply with international and regional requirements:

IEC/EN 62208 Empty enclosures for low-voltage switchgear and controlgear assemblies

IEC/EN 61439-1 / -2 Low-voltage switchgear assemblies

IEC/EN/AS 60529 Degrees of protection – IP55 to IP69K

CE & UKCA Marking Conformity to EU & UK legislation

UL Selected ranges UL listed

RoHS / REACH

Our products are designed for seamless deployment across Australia, New Zealand, Europe and the United Kingdom, providing compliance assurance in multinational projects.

Sustainability & Material Integrity

Every IP Enclosures product is designed for long service life, reparability and recyclability.

We use high-grade galvanised steel, marine-grade aluminium 5754 H111, and stainless steel 304L/316L, materials chosen for both mechanical strength and circular recyclability.

Powder-coat finishes are low-VOC and RoHS-compliant, while packaging is minimised to reduce environmental impact.

Suppliers are audited for sustainability and conflict-minerals compliance.

Our engineering focus extends beyond protection, it encompasses responsibility, ensuring every enclosure supports a more sustainable future without compromising performance or reliability.

Mounted Electrical Enclosures

Steel | Powder Coated

S1

SINGLE DOOR | IP66 IK10



The IP Enclosures S1 range of powder coated galvanised steel single door enclosures are designed to house a variety of electrical switch and control equipment. They are suitable for internal and external electrical installations for industrial, infrastructure, commercial and communications applications. All IP Enclosures are built to precision to ensure consistent high quality standards.



Features & Specifications

S1

IP Enclosures S1 range of steel electrical enclosures are suitable for general industrial applications.

Protection: IP66 IK10 (NEMA 4)
(Independent accredited test laboratory)

Standards (& Conformities):

IEC/EN 60529, IEC/EN 62208, IEC/EN 61439, UL, RoHS, CE, UKCA    N° file E534557

Material:

- Body: 1.2mm galvanised steel sheet (up to 700x500x250) 1.5mm galvanised steel sheet (800x600x200 and above)
- Gland Plate: 1.5mm galvanised steel sheet
- Door: 1.5mm galvanised steel sheet
- Device Mounting Plate: 1.5mm galvanised steel sheet
- Seal: Polyurethane.

Body: The robust monoblock body is fabricated using galvanised steel sheet (1.2mm-1.5mm). Flat face sealing surfaces are provided to increase seal life. Pre-fitted blind nutserts are incorporated to accommodate mounts and accessory fasteners to eliminate drilling and retain IP rating. Integral device plate mounts and M6 earth studs are provided. A galvanised steel gland plate is incorporated into the bottom face. Cutting, pressing and full continuous seam welding using precision automated manufacturing equipment ensures accuracy and consistent high quality.

Single Door: The robust surface mounted door is fabricated using 1.5mm galvanised steel sheet and incorporates concealed removable hinges with captive pins. The door is designed for a 110° opening. Each door contains cable management rails, an M6 earth stud and a high quality machine-applied foamed in place (FIP) Polyurethane seal. Two internal cable management rails can be removed to provide additional space for equipment, duct and door mounted control components.

Seal: A high quality machine-applied full perimeter UL listed Polyurethane seal foamed in place (FIP) provides excellent sealing over a long life. Temperature resistance -40°C to 80°C (160°C short term loading).

Lock: 5mm double bit insert quarter turn lock with key. A full range of locking options are available upon request.

Device Mounting Plate: The device mounting plate is fabricated using 1.5mm galvanised steel sheet, pressed to provide additional strength and supplied pre-fitted into the enclosure as standard.

Gland Plate: Gland plates are incorporated into the bottom face of the enclosure for cable management. They are provided with gaskets and fasteners. The size and quantity vary according to enclosure size.

Surface Treatment: UL approved AkzoNobel epoxy polyester powder coated with a textured finish. 80-120 micron average thickness. The standard electrical enclosure colour is RAL7035. A full range of other colour options are available upon request.

Certificates:

- IEC 60529 Degrees of protection provided by enclosures: Certificate AB-0386-T 1902.14 02/00
- IEC/EN 62208 Empty Enclosures for low-voltage switchgear and controlgear assemblies: Certificate 0366932-TSE-01/01
- IEC/EN61439-1, 61439-2 Low voltage switchgear and controlgear assemblies: Certificate AB-0341-T, 23-297-R1-N1-1
- CE Certificate of Compliance: Certificate SZT-24MA33485-1
- UKCA Certificate of Compliance: Certificate SZT-25MA38734-1
- UL: Listing Number E534557

IEC/EN 61439 Certified Test Ratings:

- Rated Voltage: 400 V AC
- Rated Insulation Voltage: 690 V
- Rated Impulse Withstand Voltage: 6 kV
- Rated Current: 630A
- Rated Peak Withstand Current: 40kA
- Rated Short-Time Withstand Current: 20kA (Busbar)
- Rated Conditional Short Circuit Current: 20kA
- Rated Frequency: 50Hz

Products are manufactured to Quality, Safety and Environmental standards.



Mounted Electrical Enclosures

Steel | Powder Coated

S2

DOUBLE DOOR | IP55 IK10



The IP Enclosures S2 range of powder coated galvanised steel double door enclosures are designed to house a variety of electrical switch and control equipment. They are suitable for internal and external electrical installations for industrial, infrastructure, commercial and communications applications. All IP Enclosures are built to precision to ensure consistent high quality standards.



Features & Specifications

S2

IP Enclosures S2 range of steel electrical enclosures are suitable for general industrial applications.

Protection: IP55 IK10 (NEMA 3)
(Independent accredited test laboratory)

Standards (& Conformities):
IEC/EN 60529, IEC/EN 62208, IEC/EN 61439, RoHS, CE, UKCA



Material:

- Body: 1.5mm galvanised steel sheet
- Gland Plate: 1.5mm galvanised steel sheet
- Door: 1.5mm galvanised steel sheet
- Device Mounting Plate: 1.5mm galvanised steel sheet
- Seal: Polyurethane.

Body: The robust monoblock body is fabricated using 1.5mm galvanised steel sheet. Flat face sealing surfaces are provided to increase seal life. Pre-fitted blind nutserts are incorporated to accommodate mounts and accessory fasteners to eliminate drilling and retain IP rating. Integral device plate mounts and M6 earth studs are provided. Gland plates are incorporated into the bottom face. Cutting, pressing and full continuous seam welding using precision automated manufacturing equipment ensures accuracy and consistent high quality.

Double Door: The robust surface mounted doors are fabricated using 1.5mm galvanised steel sheet and incorporates concealed removable hinges with captive pins. The doors are designed to eliminate the central mullion to improve accessibility into the enclosure. The doors are designed for a 110° opening. Each door contains integral cable management rails, an M6 earth stud and a high quality machine-applied foamed in place (FIP) Polyurethane seal. Internal cable management rails can be removed to provide additional space for equipment, duct and door mounted control components.

Seal: A high quality machine-applied full perimeter UL listed Polyurethane seal foamed in place (FIP) provides excellent sealing over a long life. Temperature resistance -40°C to 80°C (160°C short term loading).

Lock: 3 point locking system with key-lock swing handle. A full range of locking solutions are available upon request.

Device Mounting Plate: The device mounting plate is fabricated using 1.5mm galvanised steel sheet, pressed to provide additional strength and supplied pre-fitted into enclosure as standard.

Gland Plate: Gland plates are incorporated into the bottom face of the enclosure for cable management. They are provided with gaskets and fasteners. The size and quantity vary according to enclosure size.

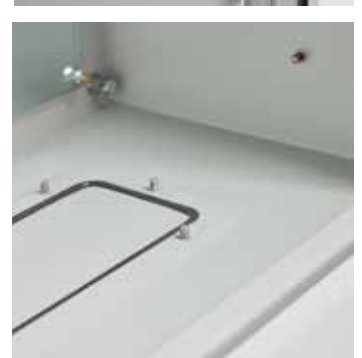
Surface Treatment: UL approved AkzoNobel epoxy polyester powder coated with a textured finish. 80-120 micron average thickness. The standard electrical enclosure colour is RAL7035. A full range of other colour options are available upon request.

Certificates:

- IEC 60529 Degrees of protection provided by enclosures: Certificate AB-0386-T 1610.05.01/00
- IEC/EN 62208 Empty Enclosures for low-voltage switchgear and controlgear assemblies: Certificate 0366932-TSE-01/01
- IEC/EN61439-1, 61439-2 Low voltage switchgear and controlgear assemblies: Certificate AB-0341-T, 23-314-R1-N1-1
- CE Certificate of Compliance: Certificate SZT-24MA33485-1
- UKCA Certificate of Compliance: Certificate SZT-25MA38734-1

IEC/EN 61439 Certified Test Ratings:

- Rated Voltage: 400 V AC
- Rated Insulation Voltage: 690 V
- Rated Impulse Withstand Voltage: 6 kV
- Rated Current: 630A
- Rated Peak Withstand Current: 40kA
- Rated Short-Time Withstand Current: 20kA (Busbar)
- Rated Conditional Short Circuit Current: 20kA
- Rated Frequency: 50Hz



Steel | Powder Coated

S1

SINGLE DOOR | IP66 IK10

Part Number	Enclosure Size	Device Plate	Locks	Weight	Accessories			Part Number Suffix		
					Inner Door	Rain Hood	Transparent Door	Optional Colours		
IP-302015	300 x 200 x 150	250 x 130	1	4	IP-PSID3020	IP-PSRH2015	-	-GRN	-BLK	-RED
IP-302515	300 x 250 x 150	250 x 180	1	5	-	-	-	-GRN	-BLK	-RED
IP-303015	300 x 300 x 150	250 x 230	1	5	IP-PSID3030	IP-PSRH3015	-	-GRN	-BLK	-RED
IP-303020	300 x 300 x 200	250 x 230	1	6	IP-PSID3030	IP-PSRH3020	-	-	-	-
IP-403015	400 x 300 x 150	350 x 230	1	7	IP-PSID4030	IP-PSRH3015	-	-	-BLK	-RED
IP-403020	400 x 300 x 200	350 x 230	1	8	IP-PSID4030	IP-PSRH3020	-	-GRN	-BLK	-RED
IP-403025	400 x 300 x 250	350 x 230	1	9	-	-	-	-GRN	-BLK	-RED
IP-404020	400 x 400 x 200	350 x 330	1	9	IP-PSID4040	IP-PSRH4020	IP-4040WINDOOR	-GRN	-BLK	-RED
IP-404025	400 x 400 x 250	350 x 330	1	11	-	-	-	-GRN	-BLK	-RED
IP-404030	400 x 400 x 300	350 x 330	1	11	IP-PSID4040	-	IP-4040WINDOOR	-GRN	-BLK	-RED
IP-503015	500 x 300 x 150	450 x 230	1	8	-	IP-PSRH3015	-	-	-	-
IP-503020	500 x 300 x 200	450 x 230	1	9	-	IP-PSRH3020	-	-	-	-RED
IP-504020	500 x 400 x 200	450 x 330	1	11	IP-PSID5040	IP-PSRH4020	-	-	-	-
IP-504025	500 x 400 x 250	450 x 330	1	12	IP-PSID5040	-	-	-	-	-
IP-505020	500 x 500 x 200	450 x 430	1	13	IP-PSID5050	-	-	-	-	-
IP-505025	500 x 500 x 250	450 x 430	1	14	IP-PSID5050	IP-PSRH5025	-	-	-BLK	-
IP-505030	500 x 500 x 300	450 x 430	1	15	IP-PSID5050	-	-	-GRN	-BLK	-RED
IP-604020	600 x 400 x 200	550 x 330	2	13	IP-PSID6040	IP-PSRH4020	IP-6040WINDOOR	-	-BLK	-
IP-604025	600 x 400 x 250	550 x 330	2	14	IP-PSID6040	-	IP-6040WINDOOR	-	-	-
IP-604030	600 x 400 x 300	550 x 330	2	15	IP-PSID6040	-	IP-6040WINDOOR	-	-BLK	-RED
IP-606020	600 x 600 x 200	550 x 530	2	18	IP-PSID6060	IP-PSRH6020	IP-6060WINDOOR	-	-BLK	-RED
IP-606030	600 x 600 x 300	550 x 530	2	20	IP-PSID6060	IP-PSRH6030	IP-6060WINDOOR	-	-BLK	-
IP-606040	600 x 600 x 400	550 x 530	2	26	IP-PSID6060	-	IP-6060WINDOOR	-	-	-
IP-705020	700 x 500 x 200	650 x 430	2	22	-	-	-	-	-	-
IP-705025	700 x 500 x 250	650 x 430	2	23	-	IP-PSRH5025	-	-	-	-
IP-804030	800 x 400 x 300	750 x 330	2	22	-	-	-	-GRN	-	-
IP-806020	800 x 600 x 200	750 x 530	2	26	IP-PSID8060	IP-PSRH6020	-	-	-	-
IP-806030	800 x 600 x 300	750 x 530	2	29	IP-PSID8060	IP-PSRH6030	-	-	-	-
IP-806040	800 x 600 x 400	750 x 530	2	32	IP-PSID8060	-	-	-GRN	-	-RED
IP-808020	800 x 800 x 200	750 x 730	2	32	IP-PSID8080	IP-PSRH8020	IP-8080WINDOOR	-	-	-
IP-808030	800 x 800 x 300	750 x 730	2	34	IP-PSID8080	IP-PSRH8030	IP-8080WINDOOR	-	-	-RED
IP-808040	800 x 800 x 400	750 x 730	2	40	IP-PSID8080	-	IP-8080WINDOOR	-	-	-
IP-1008030	1000 x 800 x 300	950 x 730	2	43	-	IP-PSRH8030	-	-	-	-
IP-1008040	1000 x 800 x 400	950 x 730	2	47	-	-	-	-	-	-
IP-1206030	1200 x 600 x 300	1150 x 530	2	40	-	IP-PSRH6030	-	-	-	-
IP-1208030	1200 x 800 x 300	1150 x 730	2	51	-	IP-PSRH8030	-	-	-	-
IP-1208040	1200 x 800 x 400	1150 x 730	2	55	-	-	-	-	-	-

SINGLE DOOR, LANDSCAPE ORIENTATION I IP66 IK10

Part Number	Enclosure Size	Device Plate	Locks	Weight	Accessories				
					Inner Door	Rain Hood	Transparent Door		
Standard	H x W x D (mm)	H x W (mm)	Qty	Kg					
IP-L304015	300 x 400 x 150	250 x 330	1	7	-	IP-PSRH4015	-	-BLK	-RED
IP-L304020	300 x 400 x 200	250 x 330	1	7	-	IP-PSRH4020	-	-BLK	-
IP-L406020	400 x 600 x 200	350 x 530	1	13	-	IP-PSRH6020	-	-	-
IP-L406030	400 x 600 x 300	350 x 530	1	15	-	IP-PSRH6030	-	-BLK	-RED
IP-L608030	600 x 800 x 300	750 x 730	2	28	-	IP-PSRH8030	-	-BLK	-RED

SINGLE DOOR, FLOOR STANDING WITH PEDESTAL I IP66 IK10

Part Number	Enclosure Size	Device Plate	Locks	Weight	Accessories				
					Inner Door	Rain Hood	Transparent Door		
Standard	H x W x D (mm)	H x W (mm)	Type	Kg					
IP-1408040	1400 x 800 x 400	1350 x 730	3-Point	104	-	-	-	-BLK	-RED
IP-1608040	1600 x 800 x 400	1550 x 730	3-Point	115	-	-	-	-BLK	-RED
IP-1608060	1600 x 800 x 600	1525 x 730	3-Point	133	-	-	-	-	-
IP-20010040	2000 x 1000 x 400	1950 x 930	3-Point	164	-	-	-	-BLK	-RED
IP-20010060	2000 x 1000 x 600	1925 x 930	3-Point	185	-	-	-	-	-

DOUBLE DOOR I IP55 IK10

Part Number	Enclosure Size	Device Plate	Locks	Weight	Accessories			
					Inner Door	Transparent Door		
Standard	H x W x D (mm)	H x W (mm)	Type	Kg				
IP-L4010030	400 x 1000 x 300	350 x 930	3-Point	26	-	-	-BLK	-RED
IP-L4010040	400 x 1000 x 400	350 x 930	3-Point	30	-	-	-BLK	-RED
IP-L6010030	600 x 1000 x 300	550 x 930	3-Point	36	-	-	-BLK	-RED
IP-L6010040	600 x 1000 x 400	550 x 930	3-Point	40	-	-	-BLK	-RED
IP-L4012030	400 x 1200 x 300	350 x 1130	3-Point	31	-	-	-	-RED
IP-L4012040	400 x 1200 x 400	350 x 1130	3-Point	35	-	-	-BLK	-RED
IP-L6012030	600 x 1200 x 300	550 x 1130	3-Point	42	-	-	-BLK	-RED
IP-L6012040	600 x 1200 x 400	550 x 1130	3-Point	46	-	-	-BLK	-RED
IP-L8010030	800 x 1000 x 300	750 x 930	3-Point	45	-	-	-	-
IP-10010030	1000 x 1000 x 300	950 x 930	3-Point	54	-	-	-BLK	-
IP-10010040	1000 x 1000 x 400	950 x 930	3-Point	59	-	-	-BLK	-
IP-12010030	1200 x 1000 x 300	1150 x 930	3-Point	63	-	-	-	-
IP-12010040	1200 x 1000 x 400	1150 x 930	3-Point	68	-	-	-	-
IP-12012030	1200 x 1200 x 300	1150 x 1130	3-Point	74	-	-	-	-
IP-12012040	1200 x 1200 x 400	1150 x 1130	3-Point	78	-	-	-	-

Mounted Electrical Enclosures

Marine Grade Aluminium | Powder Coated

A1

SINGLE DOOR | IP66 IK10



The IP Enclosures A1 range of powder coated marine grade aluminium electrical enclosures are designed to house a variety of electrical switch and control equipment in harsh environments that require a high level of corrosion resistance.



Features & Specifications

A1

IP Enclosures A1 range of marine grade aluminium electrical enclosures are suitable for general industrial applications.

Protection: IP66 IK10

Standards (& Conformities):

IEC/EN 60529, IEC/EN 62208, UL, RoHS, CE, UKCA



Material:

- Body: 2.5mm marine grade aluminium
- Door: 2.5mm marine grade aluminium
- Device Mounting Plate: 1.5mm galvanised steel sheet
- Seal: Polyurethane

Body: The robust monoblock body is fabricated using 2.5mm marine grade aluminium. Flat face sealing surfaces are provided to increase seal life. Integral device plate mounts, M6 earth studs and welded mounting feet are incorporated. Cutting, pressing and full continuous seam welding using precision automated manufacturing equipment ensures accuracy and consistent high quality.

Single Door: The robust surface mounted door is fabricated using 2.5mm marine grade aluminium and incorporates concealed removable hinges with captive pins. The door is designed for a 110° opening. Each door contains an M6 earth stud and a high quality machine-applied foamed in place (FIP) Polyurethane seal.

Seal: A high quality machine-applied full perimeter UL listed Polyurethane seal foamed in place (FIP) provides excellent sealing over a long life. Temperature resistance -40°C to 80°C (160°C short term loading).

Lock: Stainless Steel 8mm square drive quarter turn lock with key. A full range of locking solutions are available upon request.

Device Mounting Plate: The device mounting plate is 1.5mm galvanised steel sheet. It is pressed to provide strength. It is pre-fitted into the enclosure as standard.

Surface Treatment: UL approved AkzoNobel epoxy polyester powder coated with a textured finish. 80-120 micron average thickness. The standard electrical enclosure colour is RAL7035. A full range of other colour options are available upon request.

Certificates:

- IEC 60529 Degrees of protection provided by enclosures: Certificate AB-1374-T 2021-PTC-1162-2
- IEC/EN 62208 Empty Enclosures for low-voltage switchgear and controlgear assemblies: Certificate 0366932-TSE-01/01
- CE Certificate of Compliance: Certificate SZT-24MA33485-1
- UKCA Certificate of Compliance: Certificate SZT-25MA38734-1
- UL: Listing Number E534557



Part Number	Enclosure Size	Device Plate	Locks	Weight
Standard	H x W x D (mm)	H x W (mm)	Qty	Kg
IP-A302015	300 x 200 x 150	250 x 130	1	4
IP-A302515	300 x 250 x 150	250 x 180	1	4
IP-A303015	300 x 300 x 150	250 x 230	1	6
IP-A303020	300 x 300 x 200	250 x 230	1	6
IP-A403015	400 x 300 x 150	350 x 230	1	7
IP-A403020	400 x 300 x 200	350 x 230	1	8
IP-A404020	400 x 400 x 200	350 x 330	1	9
IP-A404030	400 x 400 x 300	350 x 330	1	11
IP-A503015	500 x 300 x 150	450 x 230	1	8
IP-A503020	500 x 300 x 200	450 x 230	1	9
IP-A504020	500 x 400 x 200	450 x 330	1	11
IP-A504025	500 x 400 x 250	450 x 330	1	12
IP-A505020	500 x 500 x 200	450 x 430	1	13
IP-A505025	500 x 500 x 250	450 x 430	1	14
IP-A604020	600 x 400 x 200	550 x 330	2	13
IP-A604025	600 x 400 x 250	550 x 330	2	14
IP-A606020	600 x 600 x 200	550 x 530	2	18
IP-A606030	600 x 600 x 300	550 x 530	2	20
IP-A606040	600 x 600 x 400	550 x 530	2	22
IP-A705020	700 x 500 x 200	650 x 430	2	17
IP-A804030	800 x 400 x 300	750 x 330	2	19
IP-A806020	800 x 600 x 200	750 x 530	2	23
IP-A806030	800 x 600 x 300	750 x 530	2	25
IP-A808020	800 x 800 x 200	750 x 730	2	29
IP-A808030	800 x 800 x 300	750 x 730	2	32

Mounted Electrical Enclosures

Stainless Steel Grade 304 & 316L

SS1

SINGLE DOOR | IP66 IK10



The IP Enclosures SS1 range of stainless steel single door enclosures are designed to house a variety of electrical switch and control equipment in extreme environments. They are suitable for internal and external electrical installations for industrial, infrastructure, commercial, communications, defence, marine, food and beverage applications. All IP Enclosures are built to precision to ensure consistent high quality standards.



Features & Specifications

SS1

IP Enclosures SS1 range of stainless steel electrical enclosures are suitable for general industrial applications.

Protection: IP66 IK10 (NEMA 4x)

Standards (& Conformities):

IEC/EN 60529, IEC/EN 62208, IEC/EN 61439, UL, RoHS, CE, UKCA



Material:

- Body: 1.5mm Stainless Steel. Available in either Grade 316L or 304L Stainless Steel
- Door: 1.5mm Stainless Steel. Available in either Grade 316L or 304L Stainless Steel
- Device Mounting Plate: 1.5mm Galvanised Steel Sheet
- Seal: Polyurethane

Surface Finish: 0.4 micron Ra surface brushed finish

Body: The robust monoblock body is fabricated using 1.5mm stainless steel. Flat face sealing surfaces are provided to increase seal life. Pre-fitted blind nutserts are incorporated to accommodate mounts and accessory fasteners to eliminate drilling and retain IP rating. Integral device plate mounts and M6 earth studs are provided. Cutting, pressing and full continuous seam welding using precision automated manufacturing equipment ensures accuracy and consistent high quality.

Single Door: The robust surface mounted door is fabricated using 1.5mm stainless steel and incorporates concealed removable hinges with captive pins. The door is designed for a 110° opening. Each door contains cable management rails, an M6 earth stud and a high quality machine-applied foamed in place (FIP) Polyurethane seal. Two internal cable management rails can be removed to provide additional space for equipment, duct and door mounted control components.

Seal: A high quality machine-applied full perimeter UL listed Polyurethane seal foamed in place (FIP) provides excellent sealing over a long life. Temperature resistance -40°C to 80°C (160°C short term loading).

Lock: Grade 316 Stainless Steel 8mm square drive quarter turn lock with key. A full range of locking solutions are available upon request.

Device Mounting Plate: The device mounting plate is galvanised steel sheet. It is pressed to provide strength and is pre-fitted into the enclosure.

Certificates:

- IEC 60529 Degrees of protection provided by enclosures: Certificate AB-0386-T 1902.14 02/00
- IEC/EN 62208 Empty Enclosures for low-voltage switchgear and controlgear assemblies: Certificate 0366932-TSE-01/01
- IEC/EN61439-1, 61439-2 Low voltage switchgear and controlgear assemblies: Certificate AB-0341-T, 23-297-R1-N1-1
- CE Certificate of Compliance: Certificate SZT-24MA33485-1
- UKCA Certificate of Compliance: Certificate SZT-25MA38734-1
- UL: Listing Number E534557

IEC/EN 61439 Certified Test Ratings:

- Rated Voltage: 400 V AC
- Rated Insulation Voltage: 690 V
- Rated Impulse Withstand Voltage: 6 kV
- Rated Current: 630A
- Rated Peak Withstand Current: 40kA
- Rated Short-Time Withstand Current: 20kA (Busbar)
- Rated Conditional Short Circuit Current: 20kA
- Rated Frequency: 50Hz

Products are manufactured to Quality, Safety and Environmental standards.



Mounted Electrical Enclosures

Stainless Steel Grade 304 & 316L

SS2

DOUBLE DOOR | IP55 IK10



The IP Enclosures SS2 range of stainless steel double door enclosures are designed to house a variety of electrical switch and control equipment in extreme environments. They are suitable for internal and external electrical installations for industrial, infrastructure, commercial, communications, defence, marine, food and beverage applications. All IP Enclosures are built to precision to ensure consistent high quality standards.



Features & Specifications

SS2

IP Enclosures SS2 range of grade stainless steel electrical enclosures are suitable for general industrial applications.

Protection: IP55 IK10 (NEMA 3x)
(Independent accredited test laboratory)

Standards (& Conformities):

IEC/EN 60529, IEC/EN 62208, IEC/EN 61439, RoHS, CE, UKCA



Material:

- Body: 1.5mm Stainless Steel. Available in either Grade 316L or 304L Stainless Steel
- Door: 1.5mm Stainless Steel. Available in either Grade 316L or 304L Stainless Steel
- Device Mounting Plate: 1.5mm Galvanised Steel Sheet
- Seal: Polyurethane

Surface Finish: 0.4 micron Ra surface brushed finish

Body: The robust monoblock body is fabricated using 1.5mm stainless steel. Flat face sealing surfaces are provided to increase seal life. Pre-fitted blind nutserts are incorporated to accommodate mounts and accessory fasteners to eliminate drilling and retain IP rating. Integral device plate mounts and M6 earth studs are provided. Cutting, pressing and full continuous seam welding using precision automated manufacturing equipment ensures accuracy and consistent high quality.

Double Doors: The surface mounted doors are 1.5mm stainless steel and incorporates concealed removable hinges with captive pins. The doors are designed to eliminate the central mullion to improve accessibility into the enclosure. Doors are designed for a 110° opening. Each door contains integral cable management rail studs and M6 earth studs. The cable management rails are removable to provide more space for control components.

Seal: A high quality machine-applied full perimeter UL listed Polyurethane seal foamed in place (FIP) provides excellent sealing over a long life. Temperature resistance -40°C to 80°C (160°C short term loading).

Lock: 3 point locking system with key-lock swing handle. A full range of locking solutions are available upon request.

Device Mounting Plate: The device mounting plate is 1.5mm galvanised steel sheet. It is pressed to provide strength. It is pre-fitted into the enclosure as standard.

Certificates:

- IEC 60529 Degrees of protection provided by enclosures: Certificate AB-0386-T 1610.05.01/00
- IEC/EN 62208 Empty Enclosures for low-voltage switchgear and controlgear assemblies: Certificate 0366932-TSE-01/01
- IEC/EN61439-1, 61439-2 Low voltage switchgear and controlgear assemblies: Certificate AB-0341-T, 23-314-R1-N1-1
- CE Certificate of Compliance: Certificate SZT-24MA33485-1
- UKCA Certificate of Compliance: Certificate SZT-25MA38734-1

IEC/EN 61439 Certified Test Ratings:

- Rated Voltage: 400 V AC
- Rated Insulation Voltage: 690 V
- Rated Impulse Withstand Voltage: 6 kV
- Rated Current: 630A
- Rated Peak Withstand Current: 40kA
- Rated Short-Time Withstand Current: 20kA (Busbar)
- Rated Conditional Short Circuit Current: 20kA
- Rated Frequency: 50Hz

Products are manufactured to Quality, Safety and Environmental standards.



Stainless Steel Grade 304 & 316L

SS1

SINGLE DOOR | IP66 IK10

Part Number	Optional	Enclosure Size	Device Plate	Locks	Weight	Accessories		
Grade 316	Grade 304	H x W x D (mm)	H x W (mm)	Qty	Kg	Inner Door	Rain Hood	Transparent Door
IP-SS302015	IP-304-302015	300 x 200 x 150	250 x 130	1	5	IP-SSID3020	IP-SSRH2015	-
IP-SS302515	IP-304-302515	300 x 250 x 150	250 x 180	1	5	-	-	-
IP-SS303015	IP-304-303015	300 x 300 x 150	250 x 230	1	6	IP-SSID3030	IP-SSRH3015	-
IP-SS303020	IP-304-303020	300 x 300 x 200	250 x 230	1	9	IP-SSID3030	IP-SSRH3020	-
IP-SS403015	IP-304-403015	400 x 300 x 150	350 x 230	1	8	IP-SSID4030	IP-SSRH3015	-
IP-SS403020	IP-304-403020	400 x 300 x 200	350 x 230	1	9	IP-SSID4030	IP-SSRH3020	-
IP-SS404020	IP-304-404020	400 x 400 x 200	350 x 330	1	11	IP-SSID4040	IP-SSRH4020	IP-SS4040WINDOOR
IP-SS404030	IP-304-404030	400 x 400 x 300	350 x 330	1	12	IP-SSID4040	IP-SSRH4030	IP-SS4040WINDOOR
IP-SS503015	IP-304-503015	500 x 300 x 150	450 x 230	1	9	IP-SSID5030	IP-SSRH3015	-
IP-SS503020	IP-304-503020	500 x 300 x 200	450 x 230	1	10	IP-SSID5030	IP-SSRH3020	-
IP-SS504020	IP-304-504020	500 x 400 x 200	450 x 330	1	13	IP-SSID5040	IP-SSRH4020	-
IP-SS504025	IP-304-504025	500 x 400 x 250	450 x 330	1	14	IP-SSID5040	-	-
IP-SS505020	IP-304-505020	500 x 500 x 200	450 x 430	1	15	IP-SSID5050	-	-
IP-SS505025	IP-304-505025	500 x 500 x 250	450 x 430	1	16	IP-SSID5050	IP-SSRH5025	-
IP-SS505030	IP-304-505030	500 x 500 x 300	450 x 430	1	17	IP-SSID5050	-	-
IP-SS604020	IP-304-604020	600 x 400 x 200	550 x 330	2	15	IP-SSID6040	IP-SSRH4020	IP-SS6040WINDOOR
IP-SS604025	IP-304-604025	600 x 400 x 250	550 x 330	2	16	IP-SSID6040	-	IP-SS6040WINDOOR
IP-SS604030	IP-304-604030	600 x 400 x 300	550 x 330	2	17	IP-SSID6040	IP-SSRH4030	IP-SS6040WINDOOR
IP-SS606020	IP-304-606020	600 x 600 x 200	550 x 530	2	20	IP-SSID6060	IP-SSRH6020	IP-SS6060WINDOOR
IP-SS606030	IP-304-606030	600 x 600 x 300	550 x 530	2	23	IP-SSID6060	IP-SSRH6030	IP-SS6060WINDOOR
IP-SS606040	IP-304-606040	600 x 600 x 400	550 x 530	2	26	IP-SSID6060	IP-SSRH6040	IP-SS6060WINDOOR
IP-SS705020	IP-304-705020	700 x 500 x 200	650 x 430	2	20	IP-SSID7050	-	-
IP-SS705025	IP-304-705025	700 x 500 x 250	650 x 430	2	21	IP-SSID7050	IP-SSRH5025	-
IP-SS804030	IP-304-804030	800 x 400 x 300	750 x 330	2	22	-	IP-SSRH4030	-
IP-SS806020	IP-304-806020	800 x 600 x 200	750 x 530	2	26	IP-SSID8060	IP-SSRH6020	-
IP-SS806025	IP-304-806025	800 x 600 x 250	750 x 530	2	27	IP-SSID8060	IP-SSRH6025	-
IP-SS806030	IP-304-806030	800 x 600 x 300	750 x 530	2	29	IP-SSID8060	IP-SSRH6030	-
IP-SS808020	IP-304-808020	800 x 800 x 200	750 x 730	2	33	IP-SSID8080	-	IP-SS8080WINDOOR
IP-SS808030	IP-304-808030	800 x 800 x 300	750 x 730	2	36	IP-SSID8080	IP-SSRH8030	IP-SS8080WINDOOR
IP-SS808040	IP-304-808040	800 x 800 x 400	750 x 730	2	40	IP-SSID8080	-	IP-SS8080WINDOOR
IP-SS1006025	IP-304-1006025	1000 x 600 x 250	950 x 530	2	33	-	IP-SSRH6025	-
IP-SS1006030	IP-304-1006030	1000 x 600 x 300	950 x 530	2	35	-	IP-SSRH6030	-
IP-SS1008030	IP-304-1008030	1000 x 800 x 300	950 x 730	2	44	-	IP-SSRH8030	-
IP-SS1008040	IP-304-1008040	1000 x 800 x 400	950 x 730	2	48	-	-	-
IP-SS1208030	IP-304-1208030	1200 x 800 x 300	1150 x 730	2	53	-	IP-SSRH8030	-
IP-SS1208040	IP-304-1208040	1200 x 800 x 400	1150 x 730	2	56	-	-	-

Stainless Steel Grade 304 & 316L

SS1 SS2

SINGLE DOOR, LANDSCAPE ORIENTATION | IP66 IK10

Part Number	Optional	Enclosure Size	Device Plate	Locks	Weight	Accessories		
Grade 316	Grade 304	H x W x D (mm)	H x W (mm)	Qty	Kg	Inner Door	Rain Hood	Transparent Door
IP-SSL304015	IP-304-L304015	300 x 400 x 150	250 x 330	1	8	-	-	-
-	IP-304-L304020	300 x 400 x 200	250 x 330	1	-	-	IP-SSRH4020	-
IP-SSL406030	IP-304-L406030	400 x 600 x 300	350 x 530	1	17	-	IP-SSRH6030	-
IP-SSL608030	IP-304-L608030	600 x 800 x 300	550 x 730	2	29	-	IP-SSRH8030	-

SINGLE DOOR, FLOOR STANDING WITH PEDESTAL | IP66 IK10

Part Number	Optional	Enclosure Size	Device Plate	Locks	Weight	Accessories		
Grade 316	Grade 304	H x W x D (mm)	H x W (mm)	Type	Kg	Inner Door	Rain Hood	Transparent Door
IP-SS1408040	IP-304-1408040	1400* x 800 x 400	1350 x 730	3-Point	87	-	-	-
IP-SS1608040	IP-304-1608040	1600* x 800 x 400	1550 x 730	3-Point	96	-	-	-
IP-SS1608060	IP-304-1608060	1600* x 800 x 600	1550 x 730	3-Point	110	-	-	-
IP-SS20010040	IP-304-20010040	2000* x 1000 x 400	1950 x 930	3-Point	137	-	-	-

*+100mm base plinth

DOUBLE DOOR | IP55 IK10

Part Number	Optional	Enclosure Size	Device Plate	Locks	Weight	Accessories		
Grade 316	Grade 304	H x W x D (mm)	H x W (mm)	Qty	Kg	Inner Door	Rain Hood	Transparent Door
IP-SS10010030	IP-304-10010030	1000 x 1000 x 300	950 x 930	3-Point	55	-	-	-
IP-SS10010040	IP-304-10010040	1000 x 1000 x 400	950 x 930	3-Point	59	-	-	-
IP-SS12010040	IP-304-12010040	1200 x 1000 x 400	1150 x 930	3-Point	57	-	-	-
IP-SS12012030	IP-304-12012030	1200 x 1200 x 300	1150 x 1130	3-Point	70	-	-	-

FIBOX ARCA Electrical Enclosures

High-Impact Polycarbonate

ARCA

SINGLE DOOR | IP66 IK10



ARCA IEC enclosures deliver durable protection in harsh industrial environments. Lightweight, corrosion-resistant, and easy to install, they're engineered for long service life without the challenges of steel or GRP. ARCA is a smart alternative where strength and performance are essential, with all the benefits of advanced thermoplastic construction.



Features & Specifications

ARCA

Engineered for durability and versatility in safeguarding electrical components in industrial environments, ensuring reliable protection and easy installation

Protection: IP66 IK10 (IP65 IK08 with Transparent Door)

Parameters:

- Electrical Insulation: Fully Insulated
- Halogen Free (DIN/VDE 0472, Part 815): Yes
- UV Resistance: UL 508
- Flammability Rating: UL 94 5VA
- Glow Wire Test (IEC 60695): 960C
- NEMA Class: NEMA 1, 4, 4X, 12, 13
- Temperature °C: -40 to 80

Material:

- Body and Door: High Performance Polycarbonate RAL7035 Light Grey
- Seal: Polyurethane
- Lock: 3mm Double Bit Lock with Key, 2-Point Locking System with Door Guide Included. (Optional Swing Handle – Contact us for details)



Non corrosive



Patent hinge design



Robust corner design

Standard Door	with Swing handle	with Transparent Door	Size	Inner door set	Din rail set	
SKU	SKU	SKU	H x W x D (mm)	SKU	SKU	Description
ARCA-203015		ARCA-203015W	200 x 300 x 150	IDS-ARCA-2030	DRS-ARCA-203015	1 row x 11 modules
ARCA-302015		ARCA-302015W	300 x 200 x 150	IDS-ARCA-3020	DRS-ARCA-302015	1 row x 5 modules
ARCA-303021		ARCA-303021W	300 x 300 x 210	IDS-ARCA-3030	DRS-ARCA-303021	2 row x 11 modules
ARCA-304015		ARCA-304015W	300 x 400 x 150	IDS-ARCA-3040	DRS-ARCA-304015	1 row x 16 modules
ARCA-304021		ARCA-304021W	300 x 400 x 210	IDS-ARCA-3040	DRS-ARCA-304021	1 row x 16 modules
ARCA-403015	ARCA-403015S	ARCA-403015W	400 x 300 x 150	IDS-ARCA-4030	DRS-ARCA-403015	2 row x 11 modules
ARCA-403021	ARCA-403021S	ARCA-403021W	400 x 300 x 210	IDS-ARCA-4030	DRS-ARCA-403021	2 row x 11 modules
ARCA-404021	ARCA-404021S	ARCA-404021W	400 x 400 x 210	IDS-ARCA-4040	DRS-ARCA-404021	2 row x 17 modules
ARCA-405021		ARCA-405021W	400 x 500 x 210	IDS-ARCA-4050	DRS-ARCA-405021	2 row x 22 modules
ARCA-406021	ARCA-406021S	ARCA-406021W	400 x 600 x 210	IDS-ARCA-4060	DRS-ARCA-406021	2 row x 27 modules
ARCA-504021	ARCA-504021S	ARCA-504021W	500 x 400 x 210	IDS-ARCA-5040	DRS-ARCA-504021	3 row x 16 modules
ARCA-505021	ARCA-505021S	ARCA-505021W	500 x 500 x 210	IDS-ARCA-5050	DRS-ARCA-505021	3 row x 22 modules
ARCA-507030		ARCA-507030W	500 x 700 x 300	IDS-ARCA-5070	DRS-ARCA-507030	3 row x 32 modules
ARCA-604021	ARCA-604021S	ARCA-604021W	600 x 400 x 210	IDS-ARCA-6040	DRS-ARCA-604021	3 row x 16 modules
ARCA-608030	ARCA-608030S	ARCA-608030W	600 x 800 x 300	IDS-ARCA-6080	DRS-ARCA-608030	3 row x 37 modules
ARCA-705030		ARCA-705030W	700 x 500 x 300	IDS-ARCA-7050	DRS-ARCA-705030	4 row x 21 modules
ARCA-806030	ARCA-806030S	ARCA-806030W	800 x 600 x 300	IDS-ARCA-8060	DRS-ARCA-806030	4 row x 26 modules

Lock inserts	
SKU	Description
LIS-ARCA-DB3	Locking insert Double-bit 3 mm for ARCA 2030 up to 6040
LIS-ARCA-DB3-MID	Locking insert Double-bit 3 mm for ARCA 5070 up to 8060
IDS-ARCA-8060	Padlock handle for 2030-6040

Wall mounting lugs set	
SKU	Description
WMK-ARCA-10-SMALL	Stainless Wall mounting lugs set adds 10 mm between wall and cabinet
WMK-ARCA-10-MID	Stainless Wall mounting lugs set for 5070-8060 adds 10 mm between wall and cabinet

Hinge sets	
SKU	Description
FHS-S-ARCA	Hinge set small for sizes 200 x 300 - 600 x 400
FHS-M-ARCA	Hinge set medium for sizes 500 x 700 - 800 x 600

Mounted Electrical Enclosures Stainless Steel Grade 316L

SSSR1

SLOPING ROOF | SINGLE DOOR | IP66 IK10



The IP Enclosures SSSR range of grade 316L stainless steel sloping roof enclosures are designed to house a variety of electrical switch and control equipment in extreme environments. The sloping roof assists to prevent build up of dust, debris and waste material.



Features & Specifications

SSSR1

IP Enclosures SSSR range of grade 316L stainless steel sloping roof electrical enclosures are designed to house a variety of electrical switch and control equipment while preventing build up of dust, debris and waste material.

Protection: IP66 IK10 (NEMA 4x)

Standards (& Conformities):

IEC/EN 60529, IEC/EN 62208, IEC/EN 61439, UL, RoHS, CE, UKCA



Material:

- Body: 1.5mm Grade 316L Stainless Steel
- Door: 1.5mm Grade 316L Stainless Steel
- Device Mounting Plate: 1.5mm Galvanised Steel Sheet
- Seal: Polyurethane.

Surface Finish: 0.4 micron Ra surface brushed finish.

Body: The robust monoblock body with sloping roof is fabricated using 1.5mm Grade 316L Stainless Steel. Flat face sealing surfaces are provided to increase seal life. Pre-fitted blind nutserts are incorporated to accommodate mounting and accessories. The roof consists of a 30° sloped roof design that protrudes past the seal, flush with the front of the door face to prevent build-up.

Door: The robust surface mounted door is fabricated using 1.5mm Grade 316L Stainless Steel and incorporates concealed removable hinges with captive pins. The door is designed for a 110° opening. Each door contains cable management rails, an M6 earth stud and a high quality machine-applied foamed in place (FIP) Polyurethane seal.

Seal: A high quality machine-applied full perimeter UL listed Polyurethane seal foamed in place (FIP) provides excellent sealing over a long life. Temperature resistance -40°C to 80°C (160°C short term loading).

Lock: Grade 316 Stainless Steel 8mm square drive quarter turn lock with key. A full range of locking solutions are available upon request.

Device Mounting Plate: The device mounting plate is fabricated using galvanised steel sheet, pressed to provide additional strength and supplied pre-fitted into enclosure as standard.



Part Number	Enclosure Size	Device Plate	Locks	Weight	Accessories	
Standard	H x W x D (mm)	H x W (mm)	Qty	Kg	Inner Door	Transparent Door
IP-SSSR302015	300 x 200 x 150	250 x 130	1	5	IP-SSID3020	-
IP-SSSR303015	300 x 300 x 150	250 x 230	1	7	IP-SSID3030	-
IP-SSSR403020	400 x 300 x 200	350 x 230	1	10	IP-SSID4030	-
IP-SSSR404020	400 x 400 x 200	350 x 330	1	12	IP-SSID4040	IP-SS4040WINDOOR
IP-SSSR504025	500 x 400 x 250	450 x 330	1	15	IP-SSID5040	-
IP-SSSR505025	500 x 500 x 250	450 x 430	1	18	IP-SSID5050	-
IP-SSSR604025	600 x 400 x 250	550 x 330	2	18	IP-SSID6040	IP-SS6040WINDOOR
IP-SSSR606030	600 x 600 x 300	550 x 530	2	32	IP-SSID6060	IP-SS6060WINDOOR
IP-SSSR806030	800 x 600 x 300	750 x 530	2	32	IP-SSID8060	-
IP-SSSR808030	800 x 800 x 300	750 x 730	2	40	IP-SSID8080	IP-SS8080WINDOOR

Accessories

Transparent Door | Wall Mounted

STEEL

Size	Part Number
H x W (mm)	Transparent Door
400 x 300	IP-4030WINDOOR-P
400 x 400	IP-4040WINDOOR-P
400 x 600	IP-4060WINDOOR-P
500 x 300	IP-5030WINDOOR-P
500 x 400	IP-5040WINDOOR-P
500 x 500	IP-5050WINDOOR-P
600 x 400	IP-6040WINDOOR-P
600 x 600	IP-6060WINDOOR-P
700 x 500	IP-7050WINDOOR-P
800 x 400	IP-8040WINDOOR-P
800 x 600	IP-8060WINDOOR-P
800 x 800	IP-8080WINDOOR-P
1000 x 600	IP-10060WINDOOR-P
1000 x 800	IP-10080WINDOOR-P
1200 x 600	IP-12060WINDOOR-P
1200 x 800	IP-12080WINDOOR-P

316 STAINLESS STEEL

Size	Part Number
H x W (mm)	Transparent Door
400 x 300	IP-SS4030WINDOOR-P
400 x 400	IP-SS4040WINDOOR-P
500 x 400	IP-SS5040WINDOOR-P
500 x 500	IP-SS5050WINDOOR-P
600 x 400	IP-SS6040WINDOOR-P
600 x 600	IP-SS6060WINDOOR-P
700 x 500	IP-SS7050WINDOOR-P
800 x 400	IP-SS8040WINDOOR-P
800 x 600	IP-SS8060WINDOOR-P
800 x 800	IP-SS8080WINDOOR-P
1000 x 600	IP-SS10060WINDOOR-P
1000 x 800	IP-SS10080WINDOOR-P
1200 x 600	IP-SS12060WINDOOR-P
1200 x 800	IP-SS12080WINDOOR-P



Vented Door | Wall Mounted

STEEL

Size	Part Number
H x W (mm)	Transparent Door
400 x 300	IP-4030VENTDOOR
400 x 400	IP-4040VENTDOOR
500 x 500	IP-5050VENTDOOR
600 x 400	IP-6040VENTDOOR
600 x 600	IP-6060VENTDOOR
800 x 600	IP-8060VENTDOOR

STAINLESS STEEL

Size	Part Number
H x W (mm)	Transparent Door
400 x 300	IP-SS4030VENTDOOR
400 x 400	IP-SS4040VENTDOOR
600 x 400	IP-SS6040VENTDOOR
600 x 600	IP-SS6060VENTDOOR
800 x 600	IP-SS8060VENTDOOR



Accessories

Inner Door Escutcheons | Wall Mounted

STEEL

Size H x W (mm)	Accessories Inner Door	Device Plate Inner to Outer Door	Accessories Inner Door to Mounting Plate: Enclosure Depth				
			150mm	200mm	250mm	300mm	400mm
300 x 200	IP-PSID3020	68.3mm	67.8mm	-	-	-	-
300 x 300	IP-PSID3030	68.3mm	67.8mm	117.8mm	-	-	-
400 x 300	IP-PSID4030	68.3mm	-	117.8mm	-	217.8mm	-
400 x 400	IP-PSID4040	68.3mm	-	117.8mm	-	217.8mm	-
500 x 400	IP-PSID5040	68.3mm	-	117.8mm	167.8mm	-	-
500 x 500	IP-PSID5050	68.3mm	-	117.8mm	167.8mm	217.8mm	-
600 x 400	IP-PSID6040	68.3mm	-	117.8mm	167.8mm	217.8mm	-
600 x 600	IP-PSID6060	68.3mm	-	117.8mm	-	217.8mm	317.8mm
800 x 600	IP-PSID8060	68.3mm	-	117.8mm	167.8mm	217.8mm	-
800 x 800	IP-PSID8080	68.3mm	-	117.8mm	-	217.8mm	317.8mm



STAINLESS STEEL

Size H x W (mm)	Accessories Inner Door	Device Plate Inner to Outer Door	Accessories Inner Door to Mounting Plate: Enclosure Depth				
			150mm	200mm	250mm	300mm	400mm
300 x 200	IP-SSID3020	68mm	67.2mm	-	-	-	-
300 x 300	IP-SSID3030	68mm	67.2mm	117.2mm	-	-	-
400 x 300	IP-SSID4030	68mm	67.2mm	117.2mm	-	-	-
400 x 400	IP-SSID4040	68mm	-	117.2mm	-	-	-
500 x 400	IP-SSID5040	68mm	-	-	167.2mm	-	-
500 x 500	IP-SSID5050	68mm	-	117.2mm	167.2mm	-	-
600 x 400	IP-SSID6040	68mm	-	117.2mm	-	217.2mm	317.2mm
600 x 600	IP-SSID6060	68mm	-	117.2mm	-	217.2mm	317.2mm
700 x 500	IP-SSID7050	68mm	-	-	167.2mm	-	-
800 x 600	IP-SSID8060	68mm	-	-	167.2mm	217.2mm	-
800 x 800	IP-SSID8080	68mm	-	-	-	217.2mm	-
1200 x 800	-	68mm	-	-	-	217.2mm	-



DIN Rail Kits | Wall Mounted

Part Number	Size	Description
SKU	Pole, H x W (mm)	Qty Row x Qty
IP-DB12B	12 Pole to suit 300H x 400W Enclosure	1 row of 12
IP-DB24B	24 Pole to suit 400H x 400W Enclosure	2 rows of 12
IP-DB36B	36 Pole to suit 600H x 400W Enclosure	3 rows of 12
IP-DB48B	48 Pole to suit 400H x 600W Enclosure	2 rows of 24
IP-DB72B	72 Pole to suit 600H x 600W Enclosure	3 rows of 24
IP-DBFILLERB	10 Pole Filler	-



Accessories

Rain Hoods | Wall Mounted



STEEL

Size	Part Number	Part Number Suffix
W x D (mm)	Rain Hood	Optional Colours
200 x 150	IP-PSRH2015	-
300 x 150	IP-PSRH3015	-
300 x 200	IP-PSRH3020	-
400 x 150	IP-PSRH4015	-GRN
400 x 200	IP-PSRH4020	-
500 x 250	IP-PSRH5025	-
600 x 200	IP-PSRH6020	-
600 x 250	IP-PSRH6025	-
600 x 300	IP-PSRH6030	-
800 x 200	IP-PSRH8020	-GRN
800 x 300	IP-PSRH8030	-
1200 x 300	IP-PSRH12030	-GRN
1200 x 400	IP-PSRH12040	-GRN

STAINLESS STEEL

Size	Part Number
W x D (mm)	Rain Hood
200 x 150	IP-SSRH2015
300 x 150	IP-SSRH3015
300 x 200	IP-SSRH3020
400 x 200	IP-SSRH4020
500 x 250	IP-SSRH5025
600 x 200	IP-SSRH6020
600 x 250	IP-SSRH6025
600 x 300	IP-SSRH6030
800 x 300	IP-SSRH8030



Shelf Kits | Wall Mounted



Part Number	Size	Shelf Rating
SKU	H x W x D (mm)	Kg
IP-SHL6030	600 H x 600 W x 300 D	75
IP-SHL6040	600H x 600 W x 400 D	75
IP-SHL8030	800H x 800 W x 300 D	75
IP-SHL8040	800H x 800 W x 400 D	75
IP-SHL10030	1000H x 1000 W x 300 D	75
IP-SHL10040	1000H x 1000 W x 400 D	75
IP-SHL12030	1200H x 1200 W x 300 D	75
IP-SHL12040	1200H x 1200 W x 400 D	75

Accessories

Mounting Brackets & Stands

WALL MOUNT BRACKETS (Set of 4)

Part Number	Description
IP-WMBKIT	Wall Mount Bracket Kit (4 Brackets including fasteners)
IP-SSWMBKIT	Stainless Steel Wall Mount Bracket Kit (4 Brackets including fasteners)



U-CHANNEL PROFILES

Steel

Part Number	Length (mm)
IP-PMP200	200
IP-PMP300	300
IP-PMP400	400
IP-PMP500	500
IP-PMP600	600

Stainless Steel

Part Number	Length (mm)
IP-SSPMP200	200
IP-SSPMP300	300
IP-SSPMP400	400
IP-SSPMP500	500
IP-SSPMP600	600



POLE MOUNT BRACKETS (To suit large variable diameter poles)

Part Number	Description
IP-PMB	Pole Mount Bracket
IP-SSPMB	Stainless Steel Pole Mount Bracket



POLE MOUNT CLAMPS

Steel

Stainless Steel

Part Number	Part Number	Description
IP-PMSC43	IP-SSPMSC43	Ø43 Pole Mount Clamp to suit 32NB Pipe
IP-PMSC48	IP-SSPMSC48	Ø48 Pole Mount Clamp to suit 40NB Pipe
IP-PMSC60	IP-SSPMSC60	Ø60 Pole Mount Clamp to suit 50NB Pipe
IP-PMSC89	IP-SSPMSC89	Ø89 Pole Mount Clamp to suit 80NB Pipe
IP-PMSC115	IP-SSPMSC115	Ø115 Pole Mount Clamp to suit 100NB Pipe
IP-PMSC140	IP-SSPMSC140	Ø140 Pole Mount Clamp to suit 125NB Pipe
IP-PMSC168	IP-SSPMSC168	Ø168 Pole Mount Clamp to suit 150NB Pipe
IP-PMSC220	IP-SSPMSC220	Ø220 Pole Mount Clamp to suit 200NB Pipe



NOTE: Includes 2 x Channel Spring Nuts and Washers

Earth Kits, 19" Rails, Plan Pockets

EARTHING KITS

Standard earthing kits are available. Earthing kits consist of:

- Earth wire with ring connection
- 2 x M6 Nuts (to suit electrical enclosure earth connection points)
- Earth sticker labels and instruction diagram

Part Number	Description
IP-EK01	Standard Earthing Kit
EK14992	19" Copper Earth Bar Fitted With Insulators And 300mm Earth Strap



WIRING PLAN POCKETS

A4 wiring plan pockets are available in self-adhesive polycarbonate, steel or stainless steel.

Part Number	Description
IP-PCPPA4	A4 wiring plan pocket, Self-Adhesive Polycarbonate



Floor Standing Electrical Cabinets

Steel | Powder Coated

MF1S

SINGLE DOOR | IP55 IK10



IP Enclosures MF1S range of powder coated galvanised steel floor standing electrical cabinets for low voltage switchgear and controlgear assemblies are suitable for general industrial applications. All IP Enclosures are built to precision to ensure high quality standards.



Features & Specifications

MF1S

IP Enclosures MF1S range of powder coated galvanised steel floor standing electrical cabinets for low voltage switchgear and controlgear assemblies are suitable for general industrial applications.

Protection: IP55 IK10

Standards (& Conformities):

IEC/EN 60529, IEC/EN 62208, IEC/EN 61439, RoHS, CE, UKCA



Material:

- Main Frame: 2.0mm Galvanised Steel W Profile System
- Side, Rear & Roof Panels: 1.2mm Powder-Coated Galvanised Steel Sheet
- Front Door: 2.0mm Powder-Coated Galvanised Steel Sheet
- Mounting Plates: 2.0mm Galvanised Steel Sheet
- Seal: EPDM

Main Frame: The robust modular main structure is fabricated using 2.0mm galvanised steel sheet profile system with 20mm hole pattern.

Door: The robust door is fabricated using 2.0mm powder coated galvanised steel sheet and incorporates four concealed hinges. The door is designed for a 135° opening. Each door contains earth studs and an A4 document pocket.

Side, Rear and Roof Panels: Removable panels are fabricated using 1.2mm powder coated galvanised steel sheet.

Base: 100mm high base.

Door Seal: High quality EPDM replaceable door seal.

Lock: 4 point locking system with key-lock swing handle.

Device Mounting Plate: The device mounting plate is fabricated using 1.5-2.0mm mm galvanised steel sheet, pressed to provide additional strength.

Earthing: All panels are earthed to provide earthing continuity.

Surface Treatment: UL approved AkzoNobel epoxy polyester powder coated with a textured finish. 80-120 micron average thickness.

- Colour: RAL7035 (Other colours available upon request)
- Colour of Base: RAL9005 (Other colours available upon request)

Accessories and Baying Kits: A full range of accessories are available including baying kits. Contact us for more information.
IP-MFSBAYKIT - Baying Kit to suit Freestanding Cabinets.

Certificates:

- IEC 60529 Degrees of protection provided by enclosures:
Certificate AB-0386-T 1902.14 01/00
- IEC/EN 62208 Empty Enclosures for low-voltage switchgear and controlgear assemblies:
Certificate 0366932-TSE-01/01
- IEC/EN61439-1, 61439-2 Low Voltage Switchgear and Controlgear Assemblies:
Certificate 0406176-TSE-02/01
- CE Certificate of Compliance: Certificate SZT-24MA33485-1
- UKCA Certificate of Compliance: Certificate SZT-25MA38734-1

IEC/EN 61439 Certified Test Ratings:

- Rated Voltage: 400 V AC
- Rated Insulation Voltage: 690 V
- Rated Impulse Withstand Voltage: 8 kV
- Rated Current: 630A -1600A – 4000A
- Main Circuit Short-Time Current Withstand: 30kA/1sec – 40kA/1sec – 60kA/1sec
- Distribution Circuit Short-Time Current Withstand: 25kA/1sec – 36kA/1sec – 50kA/1sec
- Auxiliary Circuit Short-Time Current Withstand: – – 30kA – 40kA/1sec – 36kA/1sec
- Neutral Circuit Short-Time Current Withstand: – – 25kA/1sec – 36kA/1sec
- Protection Circuit Short-Time Current Withstand: 18kA/1sec – 25kA/1sec – 36kA/1sec
- Rated Conditional Short Circuit Current: 36kA/630A, 30kA/400A – 45kA/1600A, 36kA/1250A, 36kA/1000A – 65kA/4000A, 55kA/3200A, 45kA/2500A, 40kA/2000A
- Rated Frequency: 50Hz

Products are manufactured to Quality, Safety and Environmental standards.



Floor Standing Electrical Cabinets

Stainless Steel Grade 316L

MF1SS

SINGLE DOOR | IP55 IK10



IP Enclosures MF1SS range of grade 316 stainless steel floor standing electrical cabinets for low voltage switchgear and controlgear assemblies are suitable for general industrial applications. All IP Enclosures are built to precision to ensure high quality standards.



Features & Specifications

MF1SS

IP Enclosures MF1SS range of grade 316 stainless steel floor standing electrical cabinets for low voltage switchgear and controlgear assemblies are suitable for general industrial applications

Protection: IP55 IK10

Standards (& Conformities):

IEC/EN 60529, IEC/EN 62208, IEC/EN 61439, RoHS, CE, UKCA



Material:

- Main Frame: 2.0mm Grade 316 Stainless Steel W Profile System
- Side, Rear & Roof Panels: 1.2mm Grade 316 Stainless Steel
- Front Door: 2.0mm Grade 316 Stainless Steel
- Mounting Plates: 2.0mm Galvanised Steel Sheet
- Seal: EPDM

Main Frame: The robust modular main structure is fabricated using 2.0mm Grade 316 Stainless Steel W Profile system with 20mm hole pattern according to DIN43660.

Door: The robust door is fabricated using 2.0mm Grade 316 Stainless Steel and incorporates four concealed reversible hinges allowing left or right hand opening. The door is designed for a 135° opening. Each door contains an M6 earth stud and provision for a document pocket.

Side, Rear and Roof Panels: Removable panels are fabricated using 1.2mm Grade 316 Stainless Steel.

Base: 100mm high base.

Door Seal: High quality EPDM replaceable door seal.

Lock: 4 point locking system with key-lock swing handle.

Device Mounting Plate: The device mounting plate is fabricated using 1.5-2.0mm mm galvanised steel sheet, pressed to provide additional strength.

Earthing: All panels are earthed to provide earthing continuity.

Surface Finish: 0.4 micron Ra surface brushed finish.

Accessories and Baying Kits: A full range of accessories are available including baying kits. Contact us for more information.

IP-MFSBAYKIT - Baying Kit to suit Freestanding Cabinets.

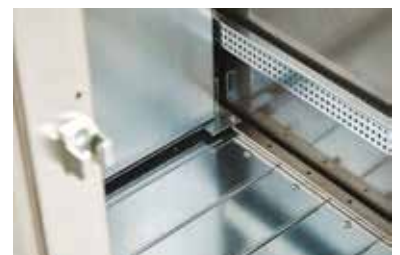
Certificates:

- IEC 60529 Degrees of protection provided by enclosures:
 - Certificate AB-0386-T 1902.14 01/00
- IEC/EN 62208 Empty Enclosures for low-voltage switchgear and controlgear assemblies:
 - Certificate 0366932-TSE-01/01
- IEC/EN61439-1, 61439-2 Low Voltage Switchgear and Controlgear Assemblies:
 - Certificate 0406176-TSE-02/01
- CE Certificate of Compliance: Certificate SZT-24MA33485-1
- UKCA Certificate of Compliance: Certificate SZT-25MA38734-1

IEC/EN 61439 Certified Test Ratings:

- Rated Voltage: 400 V AC
- Rated Insulation Voltage: 690 V
- Rated Impulse Withstand Voltage: 8 kV
- Rated Current: 630A -1600A – 4000A
- Main Circuit Short-Time Current Withstand: 30kA/1sec – 40kA/1sec – 60kA/1sec
- Distribution Circuit Short-Time Current Withstand: 25kA/1sec – 36kA/1sec – 50kA/1sec
- Auxiliary Circuit Short-Time Current Withstand: – – 30kA – 40kA/1sec – 36kA/1sec
- Neutral Circuit Short-Time Current Withstand: – – 25kA/1sec – 36kA/1sec
- Protection Circuit Short-Time Current Withstand: 18kA/1sec – 25kA/1sec – 36kA/1sec
- Rated Conditional Short Circuit Current: 36kA/630A – 30kA/400A – 45kA/1600A – 36kA/1250A – 36kA/1000A – 65kA/4000A – 55kA/3200A – 45kA/2500A – 40kA/2000A
- Rated Frequency: 50Hz

Products are manufactured to Quality, Safety and Environmental standards.



Steel | Powder Coated

MF1S

SINGLE DOOR | IP55 IK10

Part Number	Cabinet Size					Weight	Accessories
	KIT	H	x	W	x		
IP-MFS1626040-KIT	1620	x	600	x	400	103	IP-MFSID16260
IP-MFS1626060-KIT	1620	x	600	x	600	116	IP-MFSID16260
IP-MFS1626080-KIT	1620	x	600	x	800	129	IP-MFSID16260
IP-MFS1628040-KIT	1620	x	800	x	400	117	IP-MFSID16280
IP-MFS1628060-KIT	1620	x	800	x	600	135	IP-MFSID16280
IP-MFS1628080-KIT	1620	x	800	x	800	148	IP-MFSID16280
IP-MFS1866040-KIT	1860	x	600	x	400	114	IP-MFSID18660
IP-MFS1866060-KIT	1860	x	600	x	600	128	IP-MFSID18660
IP-MFS1866080-KIT	1860	x	600	x	800	142	IP-MFSID18660
IP-MFS1868040-KIT	1860	x	800	x	400	131	IP-MFSID18680
IP-MFS1868060-KIT	1860	x	800	x	600	149	IP-MFSID18680
IP-MFS1868080-KIT	1860	x	800	x	800	165	IP-MFSID18680
IP-MFS18610060-KIT	1860	x	1000	x	600	170	-
IP-MFS18610080-KIT	1860	x	1000	x	800	186	-
IP-MFS18612060-KIT	1860	x	1200	x	600	201	IP-MFSID186120
IP-MFS18612080-KIT	1860	x	1200	x	800	218	IP-MFSID186120
IP-MFS2026040-KIT	2020	x	600	x	400	122	IP-MFSID20260
IP-MFS2026060-KIT	2020	x	600	x	600	136	IP-MFSID20260
IP-MFS2026080-KIT	2020	x	600	x	800	152	IP-MFSID20260
IP-MFS2028040-KIT	2020	x	800	x	400	140	IP-MFSID20280
IP-MFS2028060-KIT	2020	x	800	x	600	159	IP-MFSID20280
IP-MFS2028080-KIT	2020	x	800	x	800	175	IP-MFSID20280
IP-MFS20210060-KIT	2020	x	1000	x	600	183	-
IP-MFS20210080-KIT	2020	x	1000	x	800	199	-
IP-MFS20212060-KIT	2020	x	1200	x	600	214	IP-MFSID202120
IP-MFS20212080-KIT	2020	x	1200	x	800	231	IP-MFSID202120

FITTED WITH 19" RACK RAILS

INCLUDES REMOVABLE REAR DOOR AND VENT CUT-OUTS.

Part Number	Cabinet Size					
	KIT	Unit Height	x	W	x	D
IP-MFS1108080-KIT19		24U	x	800	x	800
IP-MFS2208080-KIT19		42U	x	800	x	800

Stainless Steel Grade 316L

MF1SS

SINGLE DOOR | IP55 IK10

Part Number	Cabinet Size					Weight	Accessories
	KIT	H	x	W	x		
IP-MFSS1626040-KIT	1620	x	600	x	400	105	IP-MFSID16260
IP-MFSS1626060-KIT	1620	x	600	x	600	117	IP-MFSID16260
IP-MFSS1626080-KIT	1620	x	600	x	800	128	IP-MFSID16260
IP-MFSS1628040-KIT	1620	x	800	x	400	123	IP-MFSID16280
IP-MFSS1628060-KIT	1620	x	800	x	600	136	IP-MFSID16280
IP-MFSS1628080-KIT	1620	x	800	x	800	148	IP-MFSID16280
IP-MFSS1866040-KIT	1860	x	600	x	400	116	IP-MFSID18660
IP-MFSS1866060-KIT	1860	x	600	x	600	130	IP-MFSID18660
IP-MFSS1866080-KIT	1860	x	600	x	800	142	IP-MFSID18660
IP-MFSS1868040-KIT	1860	x	800	x	400	136	IP-MFSID18680
IP-MFSS1868060-KIT	1860	x	800	x	600	150	IP-MFSID18680
IP-MFSS1868080-KIT	1860	x	800	x	800	163	IP-MFSID18680

Inner Door Escutcheons | Floor Standing

Inner door escutcheons are an optional feature that can be easily fitted into IP Enclosures floor standing electrical cabinets. Inner door kits are provided with the inner door, two vertical rails and fasteners for easy assembly.

Inner doors enable operators to access control equipment inside an electrical cabinet while maintaining separation of hazardous voltage equipment within the hazardous voltage area behind the inner door. Hinged escutcheon plates accommodate control components such as circuit breaker handles, pushbuttons, indicator lights and HMI's.

STEEL RANGE

Material: 1.5mm Galvanised steel sheet.

Lock: 5mm double bit insert quarter turn locks.

Surface Treatment: UL approved epoxy polyester powder-coated with a textured finish 80-120 micron average thickness.

Standard colour: RAL7035.

STAINLESS STEEL RANGE

Material: 1.5mm Grade 316L stainless steel.

Locks: 316ss 8mm square drive quarter turn locks.



STEEL

Size			Accessories
H	x	W	Inner Door
1620	x	600	IP-MFSID16260
1620	x	800	IP-MFSID16280
1860	x	600	IP-MFSID18660
1860	x	800	IP-MFSID18680
2020	x	600	IP-MFSID20260
2020	x	800	IP-MFSID20280

STAINLESS STEEL

Size			Accessories
H	x	W	Inner Door
1620	x	600	IP-MFSSID16260
1620	x	800	IP-MFSSID16280
1860	x	600	IP-MFSSID18660
1860	x	800	IP-MFSSID18680



Accessories

SHL

Shelf Kits | Floor Standing

IP Enclosures provide a range of fixed and sliding adjustable component shelf kits for floor standing electrical cabinets.

FIXED COMPONENT SHELF (Height Adjustable)

Fixed shelf systems have many uses and can be used for component storage, separation and battery storage. Fixed shelves are pressed to provide strength. They are provided with fasteners and can be fitted into each cabinet without drilling. Multiple shelves can be fitted into each cabinet and shelves can be fully adjusted to the correct positions.

Material: 1.2 to 1.5 mm galvanised steel sheet

Surface Treatment: UL approved epoxy polyester powder coated with a textured finish. 80-120 micron average thickness.

Standard colour: RAL7035. A full range of other colour options are available upon request.



Part Number	Description	Shelf Rating
SKU	W x D (mm)	Kg
IP-SHL6060	600W x 600D Shelf System	50
IP-SHL6080	600W x 800D Shelf System	50
IP-SHL8060	800W x 600D Shelf System	50
IP-SHL8080	800W x 800D Shelf System	50
IP-SHL10060	1000W x 600D Shelf System	50
IP-SHL10080	1000W x 800D Shelf System	50



Wall Mounted IP66 19" Data Racks

Steel | Powder Coated

SDW

SINGLE DOOR | IP66 IK10



IP Enclosures IP55 Ventilated Data Racks are designed for heavy duty applications to house sensitive data network equipment in harsh environments. They are suitable for internal and external installations



Features & Specifications

SDW

IP Enclosures SDW range of IP66 19" data racks are designed for outdoor applications to house sensitive data network equipment in harsh environments. They are suitable for internal and external installations. All IP Enclosures are built to precision to ensure consistent high quality standards.

Protection: IP66 IK10

Standards (& Conformities):

IEC/EN 60529, IEC/EN 62208, EIA-310-D, RoHS, CE, UKCA



Rack Unit Sizes: 4RU, 6RU, 9RU, 12RU & 15RU

Material:

- Enclosure Body: 1.5mm galvanised steel sheet
- Enclosure Door: 1.5mm galvanised steel sheet
- 19" Data Rack Rails: 1.5mm galvanised steel sheet
- Enclosure Seal: Polyurethane. UL listed

Body & 19" Rails: The robust monoblock body is 1.5mm galvanised steel sheet. Precision automated manufacturing equipment ensures accuracy and consistent high quality. Flat face sealing surfaces increase seal life. A galvanised steel gland plate is also incorporated into the bottom face. 19" data rack rails are fitted. 600mm deep racks include front and rear rails.

Door: The surface mounted door is 1.5mm galvanised steel sheet. It incorporates concealed removable hinges with captive pins. Doors are also designed for a 110° opening. Door with windows are available as an accessory.

Seal: A high quality machine-applied full perimeter UL listed Polyurethane seal foamed in place (FIP) provides excellent sealing over a long life. Temperature resistance -40°C to 80°C (160°C short term loading).

Lock: 5mm double bit insert quarter turn lock with key. A full range of locking solutions are available upon request.

Gland Plate: Gland plates are incorporated into the bottom face of the enclosure for cable management. They are provided with gaskets and fasteners. The size and quantity vary according to enclosure size.

Surface Treatment: UL approved AkzoNobel epoxy polyester powder coated with a textured finish. 80-120 micron average thickness.

Accessories: A full range of data rack enclosure accessories are available.

Standard Colour: RAL7035 (Other colours available upon request).



Part Number	Size	Weight	Max Weight of Contents	Part Number Suffix
Standard	U/RU x Depth (mm)	Kg	Kg	Optional Colours
IP-SDW4RU30	4RU x 300 Deep 19" Data Rack	14	64	-BLK
IP-SDW6RU30	6RU x 300 Deep 19" Data Rack	17	95	-BLK
IP-SDW6RU45	6RU x 450 Deep 19" Data Rack	22	95	-BLK
IP-SDW9RU45	9RU x 450 Deep 19" Data Rack	25	143	-BLK
IP-SDW9RU60	9RU x 600 Deep 19" Data Rack	29	143	-BLK
IP-SDW12RU45	12RU x 450 Deep 19" Data Rack	30	191	-BLK
IP-SDW12RU60	12RU x 600 Deep 19" Data Rack	36	191	-BLK
IP-SDW15RU60	15RU x 600 Deep 19" Data Rack	42	239	-BLK
IP-SDW21RU60	21RU x 600 Deep 19" Data Rack	52	334	-BLK

Wall Mounted IP55 Ventilated Data Racks **SDW**

Steel | Powder Coated

SINGLE DOOR | IP66 IK10



The IP Enclosures SDW range of wall mounted IP66 19" data racks are designed for outdoor applications to house sensitive data network equipment in harsh environments. They are suitable for internal and external installations. All IP Enclosures are built to precision to ensure consistent high quality standards.



Features & Specifications

SDW

IP Enclosures SDW range of IP66 19" data racks are designed for outdoor applications to house sensitive data network equipment in harsh environments. They are suitable for internal and external installations. All IP Enclosures are built to precision to ensure consistent high quality standards.

Protection: IP55 IK10 (When fitted with IP-V2200 Fan and IP-V2000 Vent)

Standards (& Conformities):

IEC/EN 60529, IEC/EN 62208, EIA-310-D, RoHS, CE, UKCA



Rack Unit Sizes: 4RU, 6RU, 9RU, 12RU & 15RU

Material:

- Enclosure Body: 1.5mm galvanised steel sheet
- Enclosure Door: 1.5mm galvanised steel sheet
- 19" Data Rack Rails: 1.5mm galvanised steel sheet
- Enclosure Seal: Polyurethane. UL listed

Body & 19" Rails: The robust monoblock body is 1.5mm galvanised steel sheet. Two cutouts 125mm x 125mm are provided, located opposite, to house a fan and vent. Precision automated manufacturing equipment ensures accuracy and consistent high quality. Flat face sealing surfaces increase seal life. A galvanised steel gland plate is also incorporated into the bottom face. 19" data rack rails are fitted. 600mm deep racks include front and rear rails.

Door: The surface mounted door is 1.5mm galvanised steel sheet. It incorporates concealed removable hinges with captive pins. Doors are also designed for a 110° opening. Door with windows are available as an accessory.

Seal: A high quality machine-applied full perimeter UL listed Polyurethane seal foamed in place (FIP) provides excellent sealing over a long life. Temperature resistance -40°C to 80°C (160°C short term loading).

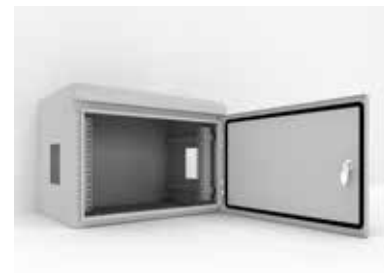
Lock: 5mm double bit insert quarter turn lock with key. A full range of locking solutions are available upon request.

Gland Plate: Gland plates are incorporated into the bottom face of the enclosure for cable management. They are provided with gaskets and fasteners. The size and quantity vary according to enclosure size.

Surface Treatment: UL approved AkzoNobel epoxy polyester powder coated with a textured finish. 80-120 micron average thickness.

Accessories: A full range of data rack enclosure accessories are available.

Standard Colour: RAL7035 (Other colours available upon request).



Part Number	Size	Weight	Max Weight of Contents
Standard	U/RU x Depth (mm)	Kg	Kg
IP-SDW6RU45V	6RU x 450 Deep 19" Data Rack	22	95
IP-SDW9RU45V	9RU x 450 Deep 19" Data Rack	25	143
IP-SDW9RU60V	9RU x 600 Deep 19" Data Rack	29	143
IP-SDW12RU45V	12RU x 450 Deep 19" Data Rack	30	191
IP-SDW12RU60V	12RU x 600 Deep 19" Data Rack	36	191
IP-SDW15RU60V	15RU x 600 Deep 19" Data Rack	42	239

Mounted IP66 19" Data Racks

SSDW

Stainless Steel Grade 316/316L (Optional 304)

SINGLE DOOR | IP66



The IP Enclosures SSDW range of stainless steel wall mounted IP66 19" data racks are designed to house sensitive data network equipment in harsh environments. They are suitable for internal and external installations.




Features & Specifications

SSDW

The IP Enclosures SSDW range of stainless steel wall mounted IP66 19" data racks are designed to house sensitive data network equipment in harsh environments. They are suitable for internal and external installations. All IP Enclosures are built to precision to ensure consistent high quality standards.

Protection: IP66 IK10

Standard: AS/EN/IEC60529, EIA-310-D, RoHS CE UKCA 

Material:

- Body: 1.5mm Grade 316/316L Stainless Steel (Optional 304)
- Door: 1.5mm Grade 316/316L Stainless Steel (Optional 304)
- 19" Data Rack Rails: 1.5mm galvanised steel sheet
- Enclosure Seal: Polyurethane

Body: The robust monoblock body is fabricated using 1.5mm Grade 316/316L Stainless Steel. Cutting, pressing and full continuous seam welding using precision automated manufacturing equipment to ensure accuracy and consistent high quality. Flat face sealing surfaces are provided to increase seal life. A stainless steel gland plate is also incorporated into the bottom face. Adjustable 19" data rack rails are provided fitted. 600mm deep racks include front and rear rails.

Door: The robust surface mounted door is fabricated using 1.5mm Grade 316/316L Stainless Steel and incorporates concealed removable hinges with captive pins. The door is designed for a 110° opening and contains integral cable management rail studs, M6 earth stud and a high quality machine-applied foamed in place (FIP) Polyurethane seal. Two internal cable management rails can be removed to provide additional space for equipment, duct and door mounted control components.

Seal: A high quality machine-applied full perimeter UL listed Polyurethane seal foamed in place (FIP) provides excellent sealing over a long life. Temperature resistance -40°C to 80°C (160°C short term loading).

Locks: Grade 316 Stainless Steel 8mm square drive quarter turn lock with key. A full range of locking solutions are available upon request.



Part Number	Size	Weight	Max Weight of Contents
Grade 316	U/RU x Depth (mm)	Kg	Kg
IP-SSDW4RU30	4RU x 300 Deep 19" Data Rack	14	64
IP-SSDW6RU30	6RU x 300 Deep 19" Data Rack	17	95
IP-SSDW6RU45	6RU x 450 Deep 19" Data Rack	22	95
IP-SSDW9RU45	9RU x 450 Deep 19" Data Rack	25	143
IP-SSDW12RU45	12RU x 450 Deep 19" Data Rack	30	191
IP-SSDW12RU60	12RU x 600 Deep 19" Data Rack	36	191

Mounted IP66 19" Data Racks

Marine Grade Aluminium | Powder Coated

ADW

SINGLE DOOR | IP66



The IP Enclosures ADW range of aluminium wall mounted IP66 19" data racks are designed for outdoor applications to house sensitive data network equipment in harsh environments. They are suitable for internal and external installations. All IP Enclosures are built to precision to ensure consistent high quality standards.



Features & Specifications

ADW

IP66 Aluminium 19" data racks are designed for heavy duty outdoor applications to house sensitive data network equipment in harsh environments. They are suitable for internal and external installations. All IP Enclosures are built to precision in Europe to ensure consistent high quality standards.

Protection: IP66 IK10

Standard: AS/EN/IEC60529, EIA-310-D, RoHS CE UKCA



Rack Unit Sizes:

- 4RU, 6RU, 9RU, 12RU & 15RU

Material:

- Body: 1.5mm Marine Grade Aluminium
- Door: 1.5mm Marine Grade Aluminium
- 19" Data Rack Rails: 1.5mm galvanised steel sheet
- Enclosure Seal: Polyurethane

Body: The robust monoblock body is fabricated from aluminium sheet. Precision automated manufacturing equipment ensures accuracy and consistent high quality. 19" data rack rails are fitted. 600mm deep racks include front and rear rails.

Door: The surface mounted door is fabricated from Aluminium. It incorporates concealed removable hinges with captive pins.

19" Data Rack Rails: 19" data rack rails are fabricated from 1.5mm galvanised steel sheet.

Seal: A high quality full perimeter seal provides excellent sealing over a long life. It is machine applied Polyurethane foamed in place (FIP).

Locks: 5mm Double Bit Quarter Turn Lock. A full range of locking solutions are available upon request.

Surface Treatment: UL approved AkzoNobel epoxy polyester powder coated with a textured finish. 80-120 micron average thickness. The standard electrical enclosure colour is RAL7035

Accessories: A full range of data rack enclosure accessories are available. Refer to accessories menu or contact our team for assistance.



Part Number	Size	Weight	Max Weight of Contents
Grade 316	U/RU x Depth (mm)	Kg	Kg
IP-ADW4RU30	4RU x 300 Deep 19" Data Rack	10	64
IP-ADW6RU30	6RU x 300 Deep 19" Data Rack	13	95
IP-ADW6RU45	6RU x 450 Deep 19" Data Rack	14	95
IP-ADW9RU45	9RU x 450 Deep 19" Data Rack	16	143
IP-ADW12RU45	12RU x 450 Deep 19" Data Rack	19	191
IP-ADW12RU60	12RU x 600 Deep 19" Data Rack	25	191
IP-ADW15RU60	15RU x 600 Deep 19" Data Rack	28	238

Floor Standing IP66 19" Data Racks

Steel | Powder Coated

SD

FRONT & REAR DOOR | IP66 IK10



The IP Enclosures SD range of floor standing IP66 19" data racks are designed for outdoor applications to house sensitive data network equipment in harsh environments. They are suitable for internal and external installations. All IP Enclosures are built to precision to ensure consistent high quality standards.



Features & Specifications

SD

IP Enclosures SD range of IP66 19" data racks are designed for outdoor applications to house sensitive data network equipment in harsh environments.

Protection: IP66 IK10

Standards (& Conformities):

IEC/EN 60529, IEC/EN 62208, EIA-310-D, RoHS, CE, UKCA



Rack Unit Sizes:

- 12RU, 16RU, 24RU, 32RU, 42RU

Material:

- Enclosure Body: 2.0 galvanised steel sheet
- Enclosure Door: 2.0 galvanised steel sheet
- 19" Data Rack Rails: 1.5mm galvanised steel sheet
- Enclosure Seal: Polyurethane

Body: The robust monoblock body is 2.0mm galvanised steel sheet. Precision automated manufacturing equipment ensures accuracy and consistent high quality. Flat face sealing surfaces increase seal life. A galvanised steel gland plate is also incorporated into the bottom face.

Door/s: The surface mounted door is 2.0mm galvanised steel sheet. It incorporates concealed removable hinges with captive pins. Doors are also designed for a 110° opening. Each door contains integral cable management rail studs and an M6 earth stud. The cable management rails are removable to provide more space for control components. (Standard range includes front door only, with fixed rear panel).

Door Seal: A high quality machine-applied full perimeter UL listed Polyurethane seal foamed in place (FIP) provides excellent sealing over a long life. Temperature resistance -40°C to 80°C (160°C short term loading).

Locks: 3 point locking system with key-lock swing handle. A full range of locking solutions are available upon request.

Gland Plate: Gland plates are incorporated into the bottom face of the enclosure for cable management. They are provided with gaskets and fasteners. The size and quantity vary according to enclosure size.

Surface Treatment: UL approved AkzoNobel epoxy polyester powder coated with a textured finish. 80-120 micron average thickness. Standard Colour: RAL7035.

Accessories: A full range of data rack enclosure accessories are available.

Part Number	Size	No. of U (RU)	Weight	Max Weight of Contents	Cabinet Size
SKU	19"	U/RU	Kg	Kg	U/RU H x W x D (mm)
IP-SD606045-RD	19"	12RU	24	191	12RU 650 x 600 x 450
IP-SD606060-RD	19"	12RU	29	191	12RU 650 x 600 x 600
IP-SD806060-RD	19"	16RU	35	254	16RU 850 x 600 x 600
IP-SD806080-RD	19"	16RU	42	254	16RU 850 x 600 x 600
IP-SD1206060-RD	19"	24RU	83	382	24RU 1200 x 600 x 600
IP-SD1206080-RD	19"	24RU	100	382	24RU 1200 x 600 x 800
IP-SD1606060-RD	19"	32RU	100	640	32RU 1550 x 600 x 600
IP-SD1606080-RD	19"	32RU	115	640	32RU 1600 x 600 x 800
IP-SD2006060-RD	19"	42RU	122	840	42RU 2000 x 600 x 600
IP-SD2006080-RD	19"	42RU	141	840	42RU 2000 x 600 x 800



Floor Standing IP66 19" Data Racks Stainless Steel Grade 316L

SSD

SINGLE DOOR | IP66 IK10



The IP Enclosures SSD range of stainless steel floor standing IP66 19" data racks are designed to house sensitive data network equipment in harsh environments. They are suitable for internal and external installations. All IP Enclosures are built to precision to ensure consistent high quality standards.



Features & Specifications

SSD

IP Enclosures SSD range of IP66 19" stainless steel data racks are designed to house sensitive data network equipment in harsh environments. They are suitable for internal and external installations.

Protection: IP66 IK10

Standards (& Conformities):

IEC/EN 60529, IEC/EN 62208, EIA-310-D, RoHS, CE, UKCA



Rack Unit Sizes: 12RU, 16RU, 24RU, 32RU, 42RU

Material:

- Enclosure Body: 1.5mm Grade 316L Stainless Steel
- Enclosure Door: 1.5mm Grade 316L Stainless Steel
- 19" Data Rack Rails: 1.5mm galvanised steel sheet
- Enclosure Seal: Polyurethane

Surface Finish: 0.4 micron Ra surface brushed finish.

Body: The robust monoblock body is fabricated using 1.5mm Grade 316L Stainless Steel. Cutting, pressing and full continuous seam welding using precision automated manufacturing equipment to ensure accuracy and consistent high quality. Flat face sealing surfaces are provided to increase seal life. A stainless steel gland plate is also incorporated into the bottom face.

Door: The robust surface mounted door is fabricated using 1.5mm Grade 316L Stainless Steel and incorporates concealed removable hinges with captive pins. The door is designed for a 110° opening. Each door contains integral cable management rail studs, M6 earth stud and a high quality machine-applied foamed in place (FIP) Polyurethane seal. Two internal cable management rails can be removed to provide additional space for equipment, duct and door mounted control components.

19" Data Rack Rails: Front and rear 19" data rack rails are fabricated from 1.5mm galvanised steel sheet.

Door Seal: A high quality machine-applied full perimeter UL listed Polyurethane seal foamed in place (FIP) provides excellent sealing over a long life. Temperature resistance -40°C to 80°C (160°C short term loading).

Lock: 3 point locking system with key-lock swing handle. A full range of locking solutions are available upon request.

Gland Plate: Gland plates are incorporated into the bottom face of the enclosure for cable management. They are provided with gaskets and fasteners. The size and quantity vary according to enclosure size.

Accessories: A full range of data rack enclosure accessories are available. Refer to accessories menu or contact our team for assistance.

Part Number	Size	No. of U (RU)	Weight	Max Weight of Contents	Cabinet Size
SKU	19"	U/RU	Kg	Kg	U/RU H x W x D (mm)
IP-SSD806060	19"	16RU	48	191	16RU 850 x 600 x 600
IP-SSD806080	19"	16RU	57	254	16RU 850 x 600 x 800
IP-SSD1206060	19"	24RU	61	382	24RU 1200 x 600 x 600
IP-SSD1206080	19"	24RU	72	382	24RU 1200 x 600 x 800
IP-SSD1606060	19"	32RU	73	640	32RU 1550 x 600 x 600
IP-SSD1606080	19"	32RU	85	640	32RU 1550 x 600 x 800
IP-SSD2006060	19"	42RU	102	840	42RU 2000 x 600 x 600
IP-SSD2006080	19"	42RU	117	840	42RU 2000 x 600 x 800



Heavy Duty IP55 19" Data Racks

Steel | Powder Coated

SD-HD

SINGLE DOOR | IP55 IK10



The range of IP66 19" Outdoor Cabinets from IP Enclosures UK are engineered for harsh outdoor environments including transport, telecoms, and infrastructure. Constructed from heavy-duty 2.0mm galvanised steel with a welded monoblock body, these enclosures provide IP66-rated protection against dust and water, and IK10 impact resistance. A distinctive sloped gable roof design effectively sheds rain, debris, and snow, making it ideal for the UK's weather conditions



Features & Specifications

SD-HD

Ideal for a wide range of UK infrastructure applications, from intelligent transport systems (ITS) to CCTV and data communication networks, these enclosures comply with IEC/EN 60529, IEC/EN 62208, EIA-310-D, CE, UKCA, and RoHS standards. Offering durability, weather protection, and internal temperature regulation of up to 25% improvement with proper ventilation, the FC Range delivers a high-performance solution for mission-critical outdoor deployments.

Protection: IP55 IK10, NEMA4

Standards (& Conformities):

IEC/EN 60529, IEC/EN 62208, EIA-310-D, RoHS, CE, UKCA



Rack Unit Size: 30RU, 36RU

Material:

- Enclosure Body: 2.0 galvanised steel sheet
- Enclosure Door: 2.0 galvanised steel sheet
- 19" Data Rack Rails: 1.5mm galvanised steel sheet
- Enclosure Seal: Polyurethane

Body: The robust monoblock body is 2.0mm galvanised steel sheet. Precision automated manufacturing equipment ensures accuracy and consistent high quality. Flat face sealing surfaces increase seal life. A galvanised steel gland plate is also incorporated into the bottom face.

Doors: The surface mounted door is 2.0mm galvanised steel sheet. It incorporates concealed removable hinges with captive pins. Doors are also designed for a 110° opening. Each door contains integral cable management rail studs and an M6 earth stud. The cable management rails are removable to provide more space for control components. (Extra Heavy Duty range includes front and rear door).

Door Seal: A high quality machine-applied full perimeter UL listed Polyurethane seal foamed in place (FIP) provides excellent sealing over a long life. Temperature resistance -40°C to 80°C (160°C short term loading).

Locks: 3 point locking system with key-lock swing handle. A full range of locking solutions are available upon request.

Gland Plate: Gland plates are incorporated into the bottom face of the enclosure for cable management. They are provided with gaskets and fasteners. The size and quantity vary according to enclosure size.

Surface Treatment: UL approved epoxy polyester powder coated with a textured finish. 80-120 micron average thickness. Standard Colour: RAL7035.

Accessories: A full range of data rack enclosure accessories are available.



Part Number	Size	No. of U (RU)	Cabinet Size	Weight	Max Weight of Contents	Type
SKU	19"	U/RU	U/RU H x W x D (mm)	Kg	Kg	
IP-SD1676080	19"	30RU	30RU 1670 x 600 x 800	133	600	Heavy Duty
IP-SD1976080	19"	36RU	36RU 1970 x 600 x 800	150	720	Heavy Duty

19" Data Rack Accessories



The IP Enclosures range of 19" rack-mounted DIN rail, distribution panels and shelves provide flexibility to fit DIN mounted electrical and control components into 19" racks.

Features & Specifications

19" Accessories

Standards (& Conformities):

Compatible with 19" racks EIA-310-D, RoHS

1RU 19" Fixed Shelves

Part Number: IP-RCLF120

Depth: 200mm

Part Number: IP-RCLF130

Depth: 300mm

Part Number: IP-RCLF140

Depth: 400mm



Can be used in either orientation

2RU 19" Fixed Shelves

Part Number: IP-RCLF240

Depth: 400mm

Part Number: IP-RCLF250

Depth: 500mm



Can be used in either orientation

3RU 19" Fixed Shelves

Part Number: IP-RCLF340

Depth: 400mm

Part Number: IP-RCLF350

Depth: 500mm

Part Number: IP-RCLF360

Depth: 600mm



Can be used in either orientation

1RU 19" Sliding Shelf

Part Number: IP-RCHF130

Depth: 225mm

Part Number: IP-RCHF140

Depth: 325mm



19" Rack Mounted Enclosure Bracket

Part Number: IP-RACKBRACKET4025-SET

Depth: 254.5mm

(1 Set = 2 x brackets as shown including fasteners)



Features & Specifications

19" Accessories

Standards (& Conformities):

Compatible with 19" racks EIA-310-D, RoHS

Slotted Din Rail Material: Electrogalvanised Steel 7.5 x 35 RoHS Compliant. Standard 35mm wide symmetrical TS35 DIN rail compatible with EN60022 and DIN46277-3.

1RU 19" DIN Terminal Rail

Part Number: IP-SDDINPANEL1

1RU 19" Cover Panel

Part Number: IP-SDCOVER1

1RU 19" Cover Panel (Ventilated)

Part Number: IP-EMH1



2RU 19" DIN Terminal Rail

Part Number: IP-SDDINPANEL2

2RU 19" Cover Panel

Part Number: IP-SDCOVER2

2RU 19" Cover Panel (Ventilated)

Part Number: IP-EMH2



3RU 19" DIN Terminal Rail

Part Number: IP-SDDINPANEL3

3RU 19" Cover Panel

Part Number: IP-SDCOVER3

3RU 19" Cover Panel (Ventilated)

Part Number: IP-EMH3



3RU 19" Distribution Board

Part Number: IP-SDDP3

(Supplied with Cover Panel)



Features & Specifications

19" Accessories

Standards (& Conformities):

Compatible with 19" racks EIA-310-D, RoHS

4RU 19" Rack Mounted DIN Rail Housing

Part Number: IP-SDDINBOX4RUU



4RU 19" Rack Mounted DIN Rail Housing

Part Number: IP-SDBOX4RU



6RU 19" Rack Mounted DIN Rail Housing

Part Number: IP-SDDINBOX6RU

6RU 19" Rack Mount Housing

Part Number: IP-SDBOX6RU



8RU 19" Rack Mounted DIN Rail Housing

Part Number: IP-SDDINBOX8RU

8RU 19" Rack Mount Housing

Part Number: IP-SDBOX8RU

1RU 19" Cable Organiser

Part Number: IP-RNG1U19



2RU 19" Cable Organiser

Part Number: IP-RNG2U19

Outdoor Cabinets

Steel | Powder Coated

FC

SINGLE DOOR | DOUBLE DOOR | IP55 IK10



IP Enclosures FC Range of 19" Outdoor Field Cabinets are designed for heavy duty outdoor applications to house sensitive data network and electrical equipment in harsh environments.



Features & Specifications

FC

IP Enclosures range of IP66 19" Outdoor Cabinets from IP Enclosures UK are engineered for harsh outdoor environments including transport, telecoms, and infrastructure.

Protection: IP66 IK10 (Non-ventilated); IP55 IK10 (Ventilated), IP33 (Louvered)

Standards (& Conformities):

IEC/EN 60529, IEC/EN 62208, EIA-310-D, RoHS, CE, UKCA



Rack Unit Size: 12U, 16U, 18U, 24U, 2x12U, 2x16U, 2x18U, 2x24U

Material:

- Body and Plinth: 2.0mm galvanised steel sheet
- Doors: 2.0mm galvanised steel sheet
- 19" Data Rack Rails: 1.5mm galvanised steel sheet
- Gland Plate: 3.0mm aluminium
- Enclosure Seal: Polyurethane

Body: The monoblock body is fabricated using 2.0mm galvanised steel and includes an integrated rain hood/sunshield and plinth. Flat face sealing surfaces are incorporated to maximise seal life. A 3mm aluminium split gland plate is installed at the base for cable access. Construction includes full seam welding to ensure high mechanical integrity.

Base: The plinth is 150mm high, fabricated from 2.0mm galvanised steel, providing structural support and cable access flexibility

Door: Constructed from 2.0mm galvanised steel, the door provides recessed mounting to deter vandalism and unauthorised access. It incorporates concealed removable hinges with captive pins and is designed for a 110° opening angle. Heavy duty door stays are fitted as standard.

19" Data Rack Rails: Front and rear 19" data rack rails are constructed from 1.5mm galvanised steel sheet for strength and compliance with EIA-310-D standards.



NON-VENTILATED | SINGLE DOOR

Part Number	Cabinet Size				
	KIT	H	x	W	x
IP-12U6545-0-GRN	12U	x	650	x	450
IP-18U6545-0-GRN	18U	x	650	x	450
IP-18U6560-0-GRN	18U	x	650	x	600
IP-24U6560-0-GRN	24U	x	650	x	600

NON-VENTILATED | DOUBLE DOOR

Part Number	Cabinet Size				
	KIT	H	x	W	x
IP-2X12U6545-0-GRN	2X12U (24U)	x	1300	x	450
IP-2X18U6560-0-GRN	2X18U (36U)	x	1300	x	600
IP-2X24U6560-0-GRN	2X24U (48U)	x	1300	x	600

VENTILATED | SINGLE DOOR

Part Number	Cabinet Size				
	KIT	H	x	W	x
IP-12U6545-GRN	12U	x	650	x	450
IP-18U6545-GRN	18U	x	650	x	450
IP-18U6560-GRN	18U	x	650	x	600
IP-24U6560-GRN	24U	x	650	x	600

VENTILATED | DOUBLE DOOR

Part Number	Cabinet Size				
	KIT	H	x	W	x
IP-2X12U6545-GRN	2X12U (24U)	x	1300	x	450
IP-2X18U6560-GRN	2X18U (36U)	x	1300	x	600
IP-2X24U6545-GRN	2X24U (48U)	x	1300	x	450
IP-2X24U6560-GRN	2 x 24U (48U)	x	1300	x	600

LOUVRED | SINGLE DOOR

Part Number	Cabinet Size				
	KIT	H	x	W	x
IP-12U6545-LVR-GRN	12U	x	650	x	450
IP-18U6545-LVR-GRN	18U	x	650	x	450
IP-18U6560-LVR-GRN	18U	x	650	x	600
IP-24U6560-LVR-GRN	24U	x	650	x	600

LOUVRED | DOUBLE DOOR

Part Number	Cabinet Size				
	KIT	H	x	W	x
IP-2X12U6545-LVR-GRN	2X12U (24U)	x	1300	x	450
IP-2X18U6560-LVR-GRN	2X18U (36U)	x	1300	x	600
IP-2X24U6560-LVR-GRN	2X24U (48U)	x	1300	x	600

Mounted Infrastructure Field Cabinets

Steel | Powder Coated

FC

SINGLE DOOR | IP66 IK10 NON-VENTILATED | IP55 IK10 VENTILATED



Pole-mounted field cabinets house sensitive data network and electrical equipment for heavy duty outdoor applications including road/traffic management and intelligent transport systems.



Features & Specifications

FC

Pole-Mounted infrastructure field cabinets are designed to house sensitive data network and electrical equipment for a variety of outdoor applications.

Protection: IP66 IK10 (Non-Ventilated); IP55 IK10 (Ventilated)

Standards (& Conformities):

IEC/EN 60529, IEC/EN 62208, RoHS, CE, UKCA



Material:

- Body: 1.5mm galvanised steel sheet
- Door: 2.0mm galvanised steel sheet
- 19" Data Rack Rails: 1.5mm galvanised steel sheet (IP-706032 & IP-706032-0 only)
- Enclosure Seal: Polyurethane

Body: The robust monoblock body is fabricated using 1.5mm galvanised steel sheet. Precision automated manufacturing equipment ensures accuracy and consistent high quality. Flat face sealing surfaces increase seal life. Integral device plate mounts and M6 earth stud are included. Fan/filter cutouts and hinged vent hoods are provided as standard. Non-ventilated option is also available. (Fans and filters and ordered separately).

Door: The front door is fabricated using 2.0mm galvanised steel sheet and is designed to provide flush recessed mounting to prevent vandalism and unauthorised access. The door incorporates concealed removable hinges with captive pins. It is hinged on the left side, designed for a 110° opening and is provided with a heavy duty door stay. An A4 plan pocket is provided.

19" Data Rack Rails: Front and rear 19" data rack rails are fabricated from 1.5mm galvanised steel sheet. Available on IP-706032 only.

Door Seals: A high quality machine-applied full perimeter UL listed Polyurethane seal foamed in place (FIP) provides excellent sealing over a long life. Temperature resistance -40°C to 80°C (160°C short term loading).

Locks: 3 point locking system with key-lock swing handle. Optional locking including half euro keyed as required, restricted keys, Bilock, etc. (IP-453522 & IP-453522-0 Single point lock with swing handle).

Device Mounting Plate: The device mounting plate is 1.5mm galvanised steel sheet. It is pressed to provide strength. It is pre-fitted into the enclosure as standard. Powder coated RAL9010 pure white.

Surface Treatment: UL approved AkzoNobel epoxy polyester powder coated with a smooth gloss finish, 80-120 micron average thickness, providing excellent exterior durability and colour retention.

Accessories: Optional Pole Mount Bracket (One-piece, full height).
Optional Base: 600mm high base, flush to suit width and depth of field cabinet. Powder coated. Refer to table for part number.



Part Number/SKU	Weight Kg	Part Number/SKU	Weight Kg	Description U/RU H x W x D	Optional Pole Mount Bracket Part Number/ SKU	Optional Base (600mm high) Part Number/SKU
IP-453522-GRN	18	IP-453522-0-GRN	12	450H x 350W x 225D	IP-PMB45 -GRN	IP-FCBASE3522
IP-654532-GRN	27	IP-654532-0-GRN	22	650H x 450W x 325D	IP-PMB65 -GRN	IP-FCBASE4532
IP-706032-GRN	32	IP-706032-0-GRN	26	12RU x 600W x 325D	IP-PMB70 -GRN	IP-FCBASE6032

Mounted Infrastructure Field Cabinets

Marine Grade Aluminium | Powder Coated

FCA

SINGLE DOOR | IP66 IK10 NON-VENTILATED | IP55 IK10 VENTILATED



Marine grade aluminium pole-mounted field cabinets house sensitive data network and electrical equipment for outdoor applications including road/traffic management and intelligent transport systems.



Features & Specifications

FCA

Marine grade aluminium pole-mounted infrastructure field cabinets are designed to house sensitive data network and electrical equipment for a variety of harsh outdoor applications.

Protection: IP66 IK10 (Non-Ventilated); IP55 IK10 (Ventilated)

Standards (& Conformities):

IEC/EN 60529, IEC/EN 62208, RoHS, CE, UKCA



Material:

- Body: 2.5mm Marine Grade Aluminium 5754-H111
- Door: 2.5mm Marine Grade Aluminium 5754-H111
- 19" Data Rack Rails: 1.5mm galvanised steel sheet (IP-A706032 & IP-A706032-0 only)
- Enclosure Seal: Polyurethane

Body: The robust monoblock body is fabricated using 2.5mm marine grade aluminium. Precision automated manufacturing equipment ensures accuracy and consistent high quality. Flat face sealing surfaces increase seal life. Integral device plate mounts and M6 earth stud are included. Fan/filter cutouts and hinged vent hoods are provided as standard. Non-ventilated option is also available. (Fans and filters and ordered separately).

Door: The front door is fabricated using 2.5mm marine grade aluminium and is designed to provide flush recessed mounting to prevent vandalism and unauthorised access. The door incorporates concealed removable hinges with captive pins. It is hinged on the left side, designed for a 110° opening and is provided with a heavy duty door stay. An A4 plan pocket is provided.

19" Data Rack Rails: Front and rear 19" data rack rails are fabricated from 1.5mm galvanised steel sheet. Available on IP-706032 only.

Door Seals: A high quality machine-applied full perimeter UL listed Polyurethane seal foamed in place (FIP) provides excellent sealing over a long life. Temperature resistance -40°C to 80°C (160°C short term loading).

Locks: 3 point locking system with key-lock swing handle. Optional locking including half euro keyed as required, restricted keys, Bilock, etc. (IP-A453522 & IP-A453522-0 Single point lock with swing handle)

Device Mounting Plate: The device mounting plate is 1.5mm galvanised steel sheet. It is pressed to provide strength. It is pre-fitted into the enclosure as standard. Powder coated RAL9010 pure white.

Surface Finish: UL approved AkzoNobel epoxy polyester powder coated with a smooth gloss finish, 80-120 micron average thickness, providing excellent exterior durability and colour retention.

Accessories: Optional Pole Mount Bracket (One-piece, full height). Optional Base: 600mm high base, flush to suit width and depth of field cabinet. Powder coated. Refer to table for part number.



Ventilated		Weight	Non-Ventilated		Weight	Description	Optional Pole Mount Bracket	Optional Base (600mm high)
Part Number/ SKU	Part Number/ SKU	Kg	Part Number/ SKU	Part Number/ SKU	Kg	U/RU H x W x D	Part Number/ SKU	Part Number/ SKU
IP-A453522	IP-A453522-GRN	10	IP-A453522-0	IP-A453522-0-GRN	8	450H x 350W x 225D	IP-PMB45	IP-FCBASE3522
IP-A654532	IP-A654532-GRN	20	IP-A654532-0	IP-A654532-0-GRN	14	650H x 450W x 325D	IP-PMB65	IP-FCBASE4532
IP-A706032	IP-A706032-GRN	20	IP-A706032-0	IP-A706032-0-GRN	17	12RU x 600W x 325D	IP-PMB70	IP-FCBASE6032

Infrastructure Field Cabinets

Steel | Powder Coated

FC

IP66 IK10 (NON-VENTILATED) | IP55 IK10 (VENTILATED)



Field cabinets house sensitive data network and electrical equipment for heavy duty outdoor applications including road/traffic management and intelligent transport systems.



Features & Specifications

FC

Infrastructure field cabinets are designed to house sensitive data network and electrical equipment for a variety of outdoor applications.

Protection: IP66 IK10 (Non-ventilated); IP55 IK10 (Ventilated)

Standards (& Conformities):

IEC/EN 60529, IEC/EN 62208, EIA-310-D, RoHS, CE, UKCA



Material:

- Body and Plinth: 2.0mm galvanised steel sheet
- Doors: 2.0mm galvanised steel sheet
- 19" Data Rack Rails: 1.5mm galvanised steel sheet
- Gland Plate: 3.0mm aluminium
- Enclosure Seal: Polyurethane

Body: The robust monoblock body is fabricated using 2.0mm galvanised steel sheet. The body is fitted with rain hood/sunshield, plinth, vent hoods and 4xlifting eye bolts. Flat face sealing surfaces are provided to increase seal life. A 3.0 mm galvanised steel split gland plate is also incorporated into the bottom face. Four cutouts 125mmx125mm are provided to house fans and filters and each are covered with removable vent hoods. Precision automated manufacturing equipment ensures accuracy and consistent high quality. (Fans and filters and ordered separately).

Doors: The front and rear doors are fabricated using 2.0mm galvanised steel sheet and are designed to provide flush recessed mounting to prevent vandalism and unauthorised access. The doors incorporate concealed removable hinges with captive pins. They are designed for a 110° opening and are provided with heavy duty door stays.

19" Data Rack Rails: Front and rear 19" data rack rails are fabricated from 1.5mm galvanised steel sheet.

Door Seals: A high quality machine-applied full perimeter UL listed Polyurethane seal foamed in place (FIP) provides excellent sealing over a long life. Temperature resistance -40°C to 80°C (160°C short term loading).

Locks: Each door includes a 3 point locking system with key-lock swing handle. Optional locking including half euro keyed as required, restricted keys, Bilock, etc. (IP-453522 & IP-453522-0 Single point lock with swing handle)

Gland Plate: 3mm aluminium split gland plates are incorporated into the base.

Surface Treatment: UL approved AkzoNobel epoxy polyester powder coated with a smooth gloss finish, 80-120 micron average thickness, providing excellent exterior durability and colour retention.



SINGLE BAY

Ventilated		Weight	Non-Ventilated		Weight	Description
Part Number/SKU	Part Number/SKU	Kg	Part Number/SKU	Part Number/SKU	Kg	U/RU H x W x D
IP-1077562	IP-1077562-GRN	113	IP-1077562-0	IP-1077562-0-GRN	102	18RU 1075H x 750W x 620D
IP-1077580	IP-1077580-GRN	130	IP-1077580-0	IP-1077580-0-GRN	118	18RU 1075H x 750W x 800D
IP-1377562	IP-1377562-GRN	131	IP-1377562-0	IP-1377562-0-GRN	119	24RU 1375H x 750W x 620D
IP-1377580	IP-1377580-GRN	149	IP-1377580-0	IP-1377580-0-GRN	137	24RU 1375H x 750W x 800D
IP-13775100	IP-13775100-GRN	169	IP-13775100-0	IP-13775100-0-GRN	157	24RU 1375H x 750W x 1000D
IP-1677562	IP-1677562-GRN	138	IP-1677562-0	IP-1677562-0-GRN	126	30RU 1675H x 750W x 620D
IP-1677580	IP-1677580-GRN	158	IP-1677580-0	IP-1677580-0-GRN	146	30RU 1675H x 750W x 800D
IP-16775100	IP-16775100-GRN	179	IP-16775100-0	IP-16775100-0-GRN	167	30RU 1675H x 750W x 800D
IP-1977562	IP-1977562-GRN	165	IP-1977562-0	IP-1977562-0-GRN	155	36RU 1975H x 750W x 620D
IP-1977580	IP-1977580-GRN	181	IP-1977580-0	IP-1977580-0-GRN	175	36RU 1975H x 750W x 800D
IP-19775100	IP-19775100-GRN	210	IP-19775100-0	IP-19775100-0-GRN	198	36RU 1975H x 750W x 1000D
IP-2277562	IP-2277562-GRN	183	IP-2277562-0	IP-2277562-0-GRN	171	42RU 2275H x 750W x 620D
IP-2277580	IP-2277580-GRN	200	IP-2277580-0	IP-2277580-0-GRN	171	42RU 2275H x 750W x 800D

DOUBLE BAY

Ventilated	Non-Ventilated	Description
Part Number/SKU	Part Number/SKU	U/RU H x W x D
IP-10715062	IP-10715062-0	2 x 18RU (36RU) Field Cabinet 1075H x 1500W x 620D
IP-10715080	IP-10715080-0	2 x 18RU (36RU) Field Cabinet 1075H x 1500W x 800D
IP-13715062	IP-13715062-0	2 x 24RU (48RU) Field Cabinet 1375H x 1500W x 620D
IP-13715080	IP-13715080-0	2 x 24RU (48RU) Field Cabinet 1375H x 1500W x 800D
IP-16715062	IP-16715062-0	2 x 30RU (60RU) Field Cabinet 1675H x 1500W x 620D
IP-16715080	IP-16715080-0	2 x 30RU (60RU) Field Cabinet 1675H x 1500W x 800D

Infrastructure Field Cabinets

Marine Grade Aluminium | Powder Coated

FCA

IP66 IK10 (NON-VENTILATED) | IP55 IK10 (VENTILATED)



Field cabinets house sensitive data network and electrical equipment for heavy duty outdoor applications including road/traffic management and intelligent transport systems.



Features & Specifications

FCA

Marine grade aluminium infrastructure field cabinets are designed to house sensitive data network and electrical equipment for a variety of outdoor applications.

Protection: IP66 IK10 (Non-ventilated); IP55 IK10 (Ventilated)

Standards (& Conformities):

IEC/EN 60529, IEC/EN 62208, EIA-310-D, RoHS, CE, UKCA



Material:

- Body and Plinth: 2.5mm Marine Grade Aluminium 5754-H111
- Doors: 2.5mm Marine Grade Aluminium 5754-H111
- 19" Data Rack Rails: 1.5mm galvanised steel sheet
- Gland Plate: 5.0mm Aluminium
- Enclosure Seal: Polyurethane

Body: The robust monoblock body is fabricated using 2.5mm marine grade aluminium. The body is fitted with rain hood/sunshield, plinth, vent hoods and 4xlifting eye bolts. Flat face sealing surfaces are provided to increase seal life. A 5.0 mm aluminium split gland plate is also incorporated into the bottom face. Four cutouts 125mmx125mm are provided to house fans and filters and each are covered with removable vent hoods. Precision automated manufacturing equipment ensures accuracy and consistent high quality. (Fans and filters and ordered separately).

Doors: The front and rear doors are fabricated using 2.5mm marine grade aluminium and are designed to provide flush recessed mounting to prevent vandalism and unauthorised access. The doors incorporate concealed removable hinges with captive pins. They are provided with heavy duty door stays.

NOTE: Double Wall option available. Refer to table below.

19" Data Rack Rails: Front and rear 19" data rack rails are fabricated from 1.5mm galvanised steel sheet.

Door Seals: A high quality machine-applied full perimeter UL listed Polyurethane seal foamed in place (FIP) provides excellent sealing over a long life. Temperature resistance -40°C to 80°C (160°C short term loading).

Locks: Each door includes a 3 point locking system with key-lock swing handle. Optional locking including half euro keyed as required, restricted keys, Bilock etc. (IP-453522 & IP-453522-0 Single point lock with swing handle)

Gland Plate: 5mm aluminium split gland plates are incorporated into the base.

Surface Treatment: UL approved AkzoNobel epoxy polyester powder coated with a smooth gloss finish, 80-120 micron average thickness, providing excellent exterior durability and colour retention.



SINGLE BAY

Ventilated		Weight	Non-Ventilated		Weight	Description
Part Number/SKU	Part Number/SKU	Kg	Part Number/SKU	Part Number/SKU	Kg	U/RU H x W x D
IP-A1077562	IP-A1077562-GRN	60	IP-A1077562-0	IP-A1077562-0-GRN	56	18RU 1075H x 750W x 620D
IP-A1077580	IP-A1077580-GRN	69	IP-A1077580-0	IP-A1077580-0-GRN	64	18RU 1075H x 750W x 800D
IP-A1377562	IP-A1377562-GRN	69	IP-A1377562-0	IP-A1377562-0-GRN	64	24RU 1375H x 750W x 620D
IP-A1377580	IP-A1377580-GRN	77	IP-A1377580-0	IP-A1377580-0-GRN	73	24RU 1375H x 750W x 800D
IP-A13775100	IP-A13775100-GRN	88	IP-A13775100-0	IP-A13775100-0-GRN	84	24RU 1375H x 750W x 1000D
IP-A1677562	IP-A1677562-GRN	67	IP-A1677562-0	IP-A1677562-0-GRN	62	30RU 1675H x 750W x 620D
IP-A1677580	IP-A1677580-GRN	77	IP-A1677580-0	IP-A1677580-0-GRN	73	30RU 1675H x 750W x 800D
IP-A16775100	IP-A16775100-GRN	88	IP-A16775100-0	IP-A16775100-0-GRN	84	30RU 1675H x 750W x 800D
IP-A1977562	IP-A1977562-GRN	86	IP-A1977562-0	IP-A1977562-0-GRN	82	36RU 1975H x 750W x 620D
IP-A1977580	IP-A1977580-GRN	97	IP-A1977580-0	IP-A1977580-0-GRN	93	36RU 1975H x 750W x 800D
IP-A19775100	IP-A19775100-GRN	109	IP-A19775100-0	IP-A19775100-0-GRN	104	36RU 1975H x 750W x 1000D
IP-A2277562	IP-A2277562-GRN	94	IP-A2277562-0	IP-A2277562-0-GRN	90	42RU 2275H x 750W x 620D
IP-A2277580	IP-A2277580-GRN	137	IP-A2277580-0	IP-A2277580-0-GRN	102	42RU 2275H x 750W x 800D

DOUBLE BAY

Ventilated	Non-Ventilated	Description
Part Number/SKU	Part Number/SKU	U/RU H x W x D
IP-A10715062	IP-A10715062-0	2 x 18RU (36RU) Field Cabinet 1075H x 1500W x 620D
IP-A10715080	IP-A10715080-0	2 x 18RU (36RU) Field Cabinet 1075H x 1500W x 800D
IP-A13715062	IP-A13715062-0	2 x 24RU (48RU) Field Cabinet 1375H x 1500W x 620D
IP-A13715080	IP-A13715080-0	2 x 24RU (48RU) Field Cabinet 1375H x 1500W x 800D
IP-A16715062	IP-A16715062-0	2 x 30RU (60RU) Field Cabinet 1675H x 1500W x 620D
IP-A16715080	IP-A16715080-0	2 x 30RU (60RU) Field Cabinet 1675H x 1500W x 800D

Air Conditioned Field Cabinets

Steel | Powder Coated

FC

AIR-CONDITIONED 19" RACK | IP55 IK10



IP Enclosures Air-Conditioned Field Cabinets are designed to house and cool sensitive data network and electrical equipment in harsh environments. They are rated IP55 and designed to prevent unauthorised access and vandalism while keeping contents cool to ensure protection in the toughest conditions.

Features & Specifications

FC

IP Enclosures FC range of steel powder coated air-conditioned field cabinets are designed to house and cool equipment in harsh environments. They are rated IP55 and designed to prevent unauthorised access while keeping contents cool by incorporating an internally-mounted air conditioner. The air conditioner is housed in a separate compartment and is accessible via a recessed side door with louvered vent hood to enhance air flow. The cooled 19" rack compartment is rated to IP55, accessible via front and rear doors.

Protection: IP55 IK10

Standards (& Conformities):

IEC/EN 60529, IEC/EN 62208, EIA-310-D, RoHS, AS/NZS 60335.2.40:2019, AS/NZS 60335.1:2020, CE, UKCA, SAA203165



Material:

- Body and Plinth: 2.0mm Galvanised steel sheet
- Doors: 2.0mm Galvanised steel sheet
- 19" Data Rack Rails: 1.5mm Galvanised steel sheet
- Gland Plate: 3.0mm Aluminium
- Enclosure Seal: Polyurethane

Body: The robust monoblock body is fabricated using 2.0mm galvanised steel sheet.

The body is fitted with rain hood/sunshield, plinth and 4xlifting eye bolts. Flat face sealing surfaces are provided to increase seal life. A 3.0 mm galvanised steel split gland plate is also incorporated into the bottom face. A segmented compartment is provided to house the air-conditioner. Precision automated manufacturing equipment ensures accuracy and consistent high quality.

Doors: The front and rear doors are fabricated using 2.0mm galvanised steel sheet and are designed to provide flush recessed mounting to prevent vandalism and unauthorised access. The doors incorporate concealed removable hinges with captive pins. They are designed for a 110° opening and are provided with heavy duty door stays.

19" Data Rack Rails: Front and rear 19" data rack rails are fabricated from 1.5mm galvanised steel sheet.

Seals: A high quality machine-applied full perimeter UL listed Polyurethane seal foamed in place (FIP) provides excellent sealing over a long life. Temperature resistance -40°C to 80°C (160°C short term loading).

Locks: Each door includes a 3 point locking system with key-lock swing handle. A full range of locking solutions are available upon request.

Gland Plate: 3.0mm aluminium split gland plates are incorporated into the bottom of the enclosure for cable management.

Surface Treatment: UL approved AkzoNobel epoxy polyester powder coated with a smooth gloss finish, 80-120 micron average thickness, providing excellent exterior durability and colour retention.

Air Conditioner:

IP Enclosures SAA approved compact air conditioners are designed for the cooling needs of outdoor electrical cabinets. They have been designed for high efficiency and low maintenance and include a condenser fan controller and pressure controller for the compressor.



Part Number	Weight	Description
SKU	Kg	U/RU H x W x D
IP-1079062-AC035	149	19" 18RU IP55 1075H x 900W x 620D for 0.35kW Air Conditioner
IP-1379062-AC085	167	19" 24RU IP55 1375H x 900W x 620D for 0.85kW Air Conditioner
IP-1679080-AC145	216	19" 30RU IP55 1675H x 900W x 800D for 1.45kW Air Conditioner
IP-1979080-AC145	243	19" 36RU IP55 1975H x 900W x 800D for 1.45kW Air Conditioner
IP-2279080-AC200	273	19" 42RU IP55 2275H x 900W x 800D for 2.00kW Air Conditioner
IP-10716562-AC035	223	19" 36RU (2 x 18RU) IP55 1075H x 1650W x 620D for 0.35kW Air Conditioner
IP-13716562-AC085	255	19" 48RU (2 x 24RU) IP55 1375H x 1650W x 620D for 0.85kW Air Conditioner
IP-16716580-AC145	321	19" 60RU (2 x 30RU) IP55 1675H x 1650W x 800D for 1.45kW Air Conditioner
IP-19716580-AC145	341	19" 72RU (2 x 36RU) IP55 1975H x 1650W x 800D for 1.45kW Air Conditioner

Air Conditioned Field Cabinets

Marine Grade Aluminium | Powder Coated

FCA

AIR-CONDITIONED 19" RACK | IP55 IK10



IP Enclosures Air-Conditioned Field Cabinets are designed to house and cool sensitive data network and electrical equipment in harsh environments. They are rated IP55 and designed to prevent unauthorised access and vandalism while keeping contents cool to ensure protection in the toughest conditions

Features & Specifications

FCA

IP Enclosures FC range of marine grade aluminium powder coated air-conditioned field cabinets are designed to house and cool equipment in harsh environments. They are rated IP55 and designed to prevent unauthorised access while keeping contents cool by incorporating an internally-mounted air conditioner. The air conditioner is housed in a separate compartment and is accessible via a recessed side door with louvered vent hood to enhance air flow. The cooled 19" rack compartment is rated to IP55, accessible via front and rear doors.

Protection: IP55 IK10

Standards (& Conformities):

IEC/EN 60529, IEC/EN 62208, EIA-310-D, RoHS, AS/NZS 60335.2.40:2019, AS/NZS 60335.1:2020, CE, UKCA, SAA203165



Material:

- Body and Plinth: 2.5mm Marine Grade Aluminium sheet
- Doors: 2.5mm Marine Grade Aluminium sheet
- 19" Data Rack Rails: 1.5mm Galvanised steel sheet
- Gland Plate: 3.0mm Aluminium
- Enclosure Seal: Polyurethane

Body: The robust monoblock body is fabricated using 2.5mm marine grade aluminium sheet. The body is fitted with rain hood/sunshield, plinth and 4xlifting eye bolts. Flat face sealing surfaces are provided to increase seal life. A 3.0 mm galvanised steel split gland plate is also incorporated into the bottom face. A segmented compartment is provided to house the air-conditioner. Precision automated manufacturing equipment ensures accuracy and consistent high quality.

Doors: The front and rear doors are fabricated using 2.5mm marine grade aluminium sheet and are designed to provide flush recessed mounting to prevent vandalism and unauthorised access. The doors incorporate concealed removable hinges with captive pins. They are designed for a 110° opening and are provided with heavy duty door stays.

19" Data Rack Rails: Front and rear 19" data rack rails are fabricated from 1.5mm galvanised steel sheet.

Seals: A high quality machine-applied full perimeter UL listed Polyurethane seal foamed in place (FIP) provides excellent sealing over a long life. Temperature resistance -40°C to 80°C (160°C short term loading).

Locks: Each door includes a 3 point locking system with key-lock swing handle. A full range of locking solutions are available upon request.

Gland Plate: 3.0mm aluminium split gland plates are incorporated into the bottom of the enclosure for cable management.

Surface Treatment: UL approved AkzoNobel epoxy polyester powder coated with a smooth gloss finish, 80-120 micron average thickness, providing excellent exterior durability and colour retention.

Air Conditioner:

IP Enclosures SAA approved compact air conditioners are designed for the cooling needs of outdoor electrical cabinets. They have been designed for high efficiency and low maintenance and include a condenser fan controller and pressure controller for the compressor.



Part Number	Weight	Description
SKU	Kg	U/RU H x W x D
IP-A1079062-AC035	89	19" 18RU IP55 1075H x 900W x 620D for 0.35kW Air Conditioner
IP-A1379062-AC085	99	19" 24RU IP55 1375H x 900W x 620D for 0.85kW Air Conditioner
IP-A1679080-AC145	90	19" 30RU IP55 1675H x 900W x 800D for 1.45kW Air Conditioner
IP-A1979080-AC145	134	19" 36RU IP55 1975H x 900W x 800D for 1.45kW Air Conditioner
IP-A2279080-AC200	154	19" 42RU IP55 2275H x 900W x 800D for 2.00kW Air Conditioner
IP-A10716562-AC035	133	19" 36RU (2 x 18RU) IP55 1075H x 1650W x 620D for 0.35kW Air Conditioner
IP-A13716562-AC085	149	19" 48RU (2 x 24RU) IP55 1375H x 1650W x 620D for 0.85kW Air Conditioner
IP-A16716580-AC145	130	19" 60RU (2 x 30RU) IP55 1675H x 1650W x 800D for 1.45kW Air Conditioner
IP-A19716580-AC145	190	19" 72RU (2 x 36RU) IP55 1975H x 1650W x 800D for 1.45kW Air Conditioner

Accessories

Infrastructure Field Cabinets

Fixed Shelf Kits

Fixed shelf kits have many uses and can be used for component storage and battery storage. Shelves are ventilated. They are provided with fasteners and can be easily fitted without drilling.

Material: Galvanised steel sheet.

Surface Treatment: UL approved epoxy polyester powder coated with a textured finish. 80-120 micron average thickness. Colour RAL7035.

Part Number/SKU	Description	Shelf Rating
IP-FCSHL7562	Light Duty Shelf to suit 750W x 620D Field Cabinet	50kg
IP-FCSHH7562	Heavy Duty Shelf to suit 750W x 620D Field Cabinet	250kg
IP-FCSHH7580	Heavy Duty Shelf to suit 750W x 800D Field Cabinet	250kg



Sliding Shelf Kits (Laptop Drawers)

Sliding shelf kits (Laptop drawer kits) are provided assembled complete with 4 screws for fast and easy fitting without drilling.

Material: Galvanised steel sheet.

Surface Treatment: UL approved epoxy polyester powder coated with a textured finish. 80-120 micron average thickness. Colour RAL7035.

Part Number/SKU	Description	Shelf Rating
IP-FCDRAWER	Laptop Drawer to suit 750W x 620D Field Cabinet	25kg
IP-FCDRAWER800	Laptop Drawer to suit 750W x 800D Field Cabinet	25kg



General Accessories

Device mounting plates, document storage pockets and cage nuts:

Part Number/SKU	Shelf Rating
IP-M6SCREW-CAGENUT	M6 Cage Nut & Screw (Pack of 50)



Accessories

Infrastructure Field Cabinets

Pedestal Bases

Material: Galvanised steel sheet | Marine grade aluminium

Part Number/SKU	Part Number/SKU	Description
Steel	Aluminium	
IP-FCBASE3522-GRN	IP-FCBASE3522-GRN	600H Pedestal Base to suit 350W x 225D Field Cabinet
IP-FCBASE4532-GRN	IP-FCBASE4532-GRN	600H Pedestal Base to suit 450W x 325D Field Cabinet
IP-FCBASE6032-GRN	IP-FCBASE6032-GRN	600H Pedestal Base to suit 600W x 325D Field Cabine

Pole-Mount Brackets

Material: Galvanised steel sheet | Grade 304 Stainless Steel

Part Number/SKU				Description
Steel		304SS (For Aluminium Field Cabinets)		
IP-PMB45	IP-PMB45-GRN	IP-APMB45	IP-APMB45-GRN	To suit 450H x 350W x 225D Field Cabinet
IP-PMB65	IP-PMB65-GRN	IP-APMB65	IP-APMB65-GRN	To suit 650H x 450W x 325D Field Cabinet
IP-PMB70	IP-PMB70-GRN	IP-APMB70	IP-APMB70-GRN	To suit 12RU x 600W x 325D Field Cabinet



Vented Doors

Material: Galvanised steel sheet | Marine grade aluminium

Part Number/SKU	Part Number/SKU	Description
Steel	Aluminium	H x W (mm)
IP-4535VENTDOOR-GRN	IP-A4535VENTDOOR	450 x 350
IP-6545VENTDOOR-GRN	IP-A6545VENTDOOR	650 x 450
IP-7060VENTDOOR-GRN	IP-A7060VENTDOOR	700 x 600



Double Wall Aluminium Cabinets

Aluminium | Powder Coated

ALM



Double-Wall Aluminium Electrical Cabinets offer reliable protection from extreme heat and direct sunlight to protect critical infrastructure. The double-wall aluminium construction eliminates solar heat gain while providing passive heat dissipation through natural convection. The high-performance passive heat dissipation provides the best protection from heat in the harshest sun.

Features & Specifications

ALM

Reduce heat inside electrical cabinets by eliminating solar heat gain with Double-Wall Aluminium Electrical Cabinets. IP Enclosures and Almatec Switzerland have partnered together to serve customers in Australia with the highest quality Double-Wall Aluminium Electrical Cabinets in the world. Extreme weather and climate events including extreme heat are increasing in frequency and severity which often results in energy and communications equipment failures.

Protection: IP55 IK10; Shock, Transport & Vibration ETS EN 300-01; Seismic/Earthquake ETS EN 300-019-2-4

Standards (& Conformities): IEC/EN 60529, IEC/EN 62208, IEC/EN 61439, RoHS, REACH, WEEE

Material:

- Body: Double-Wall Aluminium
- Doors: Double-Wall Aluminium
- Seal: EPDM

Cabinet Frame and Panels: The Almatec double-wall construction is an innovative design to eliminate solar heat gain while providing passive heat dissipation through natural convection. The robust frame is constructed from torsion-free hollow aluminium profiles. The double-walled filler profiles provide reliable stability while the baseplate with cable feedthrough permanently protects the inside of the cabinet from ground moisture. The powder-coated aluminium construction provides protection against corrosion in harsh conditions including coastal saltwater environments. The double-walled construction also assists to reduce noise emissions. The cabinet is made in Switzerland to the highest standards.

Doors: The robust doors are fabricated using hollow aluminium profiles that eliminate solar heat gain while providing passive heat dissipation through natural convection. The doors are designed with semi-concealed hinges for 180° opening.

Seals: An Elastomer EPDM Synthetic Seal is inserted into the aluminium profile to provide a high quality full perimeter seal. The EPDM seal provides excellent resistance to chemicals, ozone and UV.

Locks: Each door is fitted with a 3-point bar lock and swivel lever handle.

Gland Plate: 3.0mm aluminium split gland plates are incorporated into the bottom of the enclosure for cable management.

Surface Treatment: Powder-coated RAL7035.

Accessories: A range of accessories are available including Device Mounting Plates and adjustable 19" Rack Mounting Kits.

Certificates:

- IEC/EN 60529 Degrees of protection provided by enclosures: Certificate P50-10-0085
- IEC/EN 62208 Empty Enclosures for low-voltage switchgear and controlgear assemblies: Certificate IK-2631
- IEC/EN 61439, Low voltage switchgear and controlgear assemblies: Certificate IK-4028
- ETS EN 300-019-2-4 (Seismic/Earthquake): Certificate (CoC Almatec) 16-12-09
- ETS 300-01 (Transport & Vibration): Certificate P50-10-0034

Pole-Mounted Double-Wall Aluminium Cabinets

Part Number	Size	Device Mounting Plate	19" Rack Kit
SKU	HxWxD (mm)	SKU	SKU
ALM-ANK453535	450x350x350	ALM-ANK453535MP	-
ALM-ANK654535	650x450x350	ALM-ANK654535MP	-

Floor-Mounted Double-Wall Aluminium Cabinets

Part Number	Size	Device Mounting Plate	19" Rack Kit
SKU	HxWxD (mm)	SKU	SKU
ALM-ANK806045	800x600x450	ALM-ANK806045MP	ALM-ANK806045RK
ALM-ANK1006060	1000x600x600	ALM-ANK1006060MP	ALM-ANK1006060RK
ALM-ANK10010045	1000x1000x450	ALM-ANK10010045MP	ALM-ANK10010045RK
ALM-ANK10012060	1000x1200x600	ALM-ANK10012060MP	ALM-ANK10012060RK
ALM-ANK1208045	1200x800x450	ALM-ANK1208045MP	ALM-ANK1208045RK
ALM-ANK12015045	1200x1500x450	ALM-ANK12015045MP	ALM-ANK12015045RK
ALM-ANK12015060	1200x1500x600	ALM-ANK12015060MP	ALM-ANK12015060RK
ALM-ANK1608060	1600x800x600	ALM-ANK1608060MP	ALM-ANK1608060RK
ALM-ANK16015080	1600x1500x800	ALM-ANK16015080MP	ALM-ANK16015080RK
ALM-ANK1808080	1800x800x800	ALM-ANK1808080MP	ALM-ANK1808080RK
ALM-ANK2007070	2000x700x700	ALM-ANK2007070MP	ALM-ANK2007070RK
ALM-ANK20013070	2000x1300x700	ALM-ANK20013070MP	ALM-ANK20013070RK





Why IP69K Hygienic Design Matters?

Industries such as food & beverage, pharmaceutical, biotech and chemical processing demand the highest level of enclosure hygiene.

Surfaces must withstand frequent high-pressure, high-temperature wash-downs and exposure to aggressive cleaning agents without compromising seal integrity.

IP Enclosures' Hygienic Range (H, HPB, HTB) is purpose-designed and tested to IP69K, exceeding IP66 protection.

Each enclosure is fabricated from stainless steel with smooth radius corners, a sloped roof for self-drainage, and crevice-free joints that prevent bacterial growth.

Key Features:

- IP69K resistance to 80 °C wash-down at 100 bar
- ≤ 0.2 µm Ra surface finish
- FDA / EHEDG-aligned hygienic design principles
- Silicone seals resistant to common CIP agents

Whether installed in a European dairy plant, a UK food-packaging facility or an Australasian pharmaceutical line, IP Enclosures' hygienic systems ensure regulatory compliance, easy cleaning, and absolute protection of electrical equipment.

IP69K Hygienic Electrical Enclosures
Food Beverage & Pharmaceutical

IP69K Hygienic Electrical Enclosures Stainless Steel

H

SLOPING ROOF | SINGLE DOOR | HYGIENIC FOOD GRADE | IP69K IK07



The IP Enclosures H range of IP69K hygienic food grade electrical enclosures are designed for applications within the food & beverage, pharmaceutical and other industries that require high hygienic standards.



Features & Specifications

IP69K hygienic food grade electrical enclosures are designed to prevent contamination and are suitable for the food & beverage, pharmaceutical and other industries that require high hygienic standards.

Protection: IP66 IK07, IP69K. Upon Request: IECEx Ex eb IIC Gb (for gas), Ex tb IIC Db (for dust)

Standards (& Conformities):

DGVU EN1672-2, EN62208, EN/AS60529, ISO20653, UL508A, EHEDG, RoHS, CE, UKCA, IEC60079



Material:

- Body: 1.5mm Grade 304 Stainless Steel
- Door: 1.5mm Grade 304 Stainless Steel
- Device Mounting Plate: Galvanised Steel Sheet
- Seal: Blue Silicone FDA compliant

Body: The robust monoblock body with 30° sloping roof is fabricated using 1.5mm Grade 304 Stainless Steel. It is designed to be completely smooth and without crevices and without concave angles to facilitate cleaning and avoid deposits. The body is designed to promote self draining for ease of hygienic cleaning.

Door: The door is fabricated using 1.5mm Grade 304 Stainless Steel and includes specially cast internal hinges. The door is designed for a 115° opening with hinges on the right hand side.

Seal: Blue silicone seal, FDA compliant for food production areas. Replaceable.

Lock: IP69K Stainless Steel Hygiene lock with seal. Dirt resistant and easy to clean.

Device Mounting Plate: Fabricated using galvanised steel sheet. Supplied fitted.

Surface Finish: 0.2 microns.

Floor Standing Cabinets: Cabinets marked with an asterisk "*" below are provided with a base with adjustable feet.

Accessories: Hygienic Spacer Bracket Kit. SKU: IP-HSB-KIT (Set of 4).



Part Number	Enclosure Size	Overall Height	Device Plate	Locks	Mass
SKU	H x W x D (mm)	H2 (mm)	H x W (mm)	Qty	Kg
IP-H302015	300 x 200 x 150	388	245 x 145	1	7.5
IP-H453821	450 x 380 x 210	570	395 x 325	2	12.5
IP-H456030	450 x 600 x 300	622	395 x 545	2	25.0
IP-H453830	450 x 380 x 300	622	395 x 325	1	18.0
IP-H603821	600 x 380 x 300	720	545 x 325	2	20.5
IP-H605021	600 x 500 x 210	720	545 x 445	2	21.5
IP-H606021	600 x 600 x 210	720	545 x 545	2	26.5
IP-H508030	500 x 800 x 300	672	445 x 745	2	39.5
IP-H808030	800 x 800 x 300	972	745 x 745	2	47.5
IP-H1008030	1000 x 800 x 300	1172	945 x 745	3	57
IP-H1208030	1200 x 800 x 300	1372	1145 x 745	3	76
IP-H1808051	1800 x 802 x 510	2082	1715 x 689	3	114

IP69K Pushbutton Enclosures Stainless Steel

HPB

IP66 IK08 | IP69K



The HPB range of IP69K Pushbutton Enclosures are designed for applications within the food & beverage, pharmaceutical and other industries.




Features & Specifications

HPB

IP69K pushbutton enclosures are designed to prevent contamination and are suitable for the food & beverage, pharmaceutical and other industries.

Protection: IP66 IK08, IP69K, Nema Type 1, 12, 4, 4x.

Standards (& Conformities):

EN/AS60529, ISO20653, UL508A, RoHS, CE, UKCA    N° file E231227

Material:

- Body: 1.0mm Grade 304 Stainless Steel.
- Cover: 1.0mm Grade 304 Stainless Steel.
- Seal: Blue Silicone FDA compliant

Holes: Ø 22.5.

Body: The body is fabricated using 1.0mm Grade 304 Stainless Steel. It is designed to be completely smooth and without crevices and without concave angles to facilitate cleaning and avoid deposits. The body is designed to promote self draining for ease of hygienic cleaning.

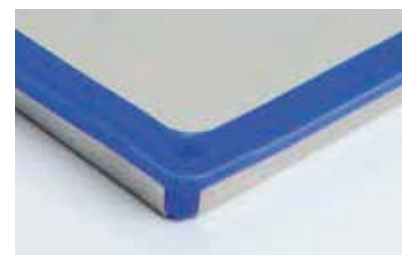
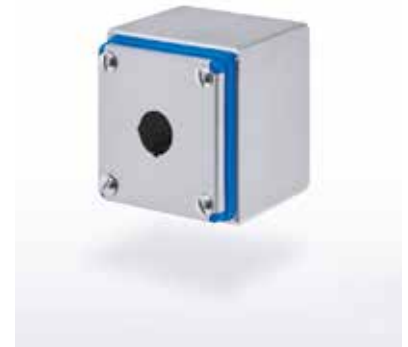
Cover: The cover is fabricated using 1.0mm Grade 304 Stainless Steel and includes a clip-in silicone seal.

Seal: Blue silicone seal, FDA compliant for food production areas. Replaceable.

Surface Finish: 0.2 microns.

Accessories: Hygienic Wall Mounting Brackets. SKU: IP-HWMB (Set of 2).

Part Number	Enclosure Size	Number of Holes	Hole Centres	Useable Depth	Mass
SKU	H x W x D (mm)	Ø 22.5mm	mm	mm	Kg
IP-HPB1	90 x 90 x 90	1	-	75	0.52
IP-HPB2	140 x 90 x 90	2	55	75	0.68
IP-HPB3	200 x 90 x 90	3	55	75	0.91
IP-HPB4	280 x 90 x 90	4	60	75	1.11



IP69K Terminal Boxes

Stainless Steel

HTB

IP66 IK08 | IP69K



The HTB range of IP69K Terminal Boxes are designed for applications within the food & beverage, pharmaceutical and other industries.

Features & Specifications

HTB

IP69K terminal boxes are designed to prevent contamination and are suitable for the food & beverage, pharmaceutical and other industries.

Protection: IP66 IK08, IP69K. Upon Request: Nema Type 1, 12, 4, 4x, IECEx Ex eb IIC Gb (for gas), Ex tb IIIC Db (for dust)

Standards (& Conformities):

EN/AS60529, ISO20653, UL508A, RoHS, CE, UKCA, IEC60079



Material:

- Body: 1.0 to 1.2mm Grade 304 Stainless Steel.
- Cover: 1.0 to 1.2mm Grade 304 Stainless Steel.
- Seal: Blue Silicone FDA compliant

Body: The body is fabricated using 1.0mm to 1.2mm Grade 304 Stainless Steel. It is designed to be completely smooth and without crevices and without concave angles to facilitate cleaning and avoid deposits. The body is designed to promote self draining for ease of hygienic cleaning.

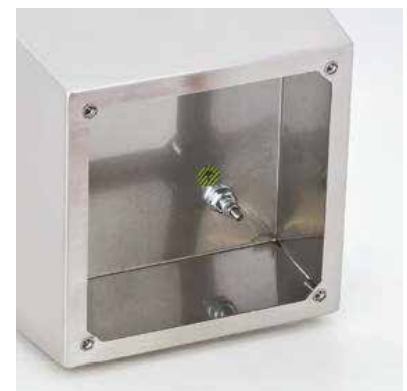
Cover: The cover is fabricated using 1.0mm to 1.2mm Grade 304 Stainless Steel and includes a clip-in silicone seal.

Seal: Blue silicone seal, FDA compliant for food production areas. Replaceable.

Surface Finish: 0.2 microns.

Accessories: Hygienic Wall Mounting Brackets. SKU: IP-HWMB (Set of 2).

Part Number	Enclosure Size	Useable Depth	Mass
SKU	H x W x D (mm)	mm	Kg
IP-HTB1010	100 x 100 x 100	85	0.72
IP-HTB1610	160 x 100 x 100	85	1.01
IP-HTB2010	200 x 100 x 100	85	1.21
IP-HTB1616	160 x 160 x 100	85	1.43
IP-HTB2516	250 x 160 x 100	85	2.05
IP-HTB2020	200 x 200 x 100	85	2.12



IP66-IP67 Pushbutton Enclosures Stainless Steel

SSP

IP66, IP67 | 22.5MM HOLE & 30.5MM HOLE



Features & Specifications

SSP

The IP Enclosures SSP range of grade stainless steel pushbutton enclosures are ideal for use in the harshest environments. The silicon seal gasket is resistant to harsh chemicals. They are available in 1 hole, 2 hole, 3 hole, 4 hole, 6 hole and 8 hole configurations.

Protection: IP66, IP67, NEMA 4x.

Standards (& Conformities):

IEC/EN/AS60529, RoHS, CE, UKCA NEMA 4x



Material:

- Body: 1.0mm Grade 304 & 316L Stainless Steel.
- Lid/Door: 1.0mm Grade 304 & 316L Stainless Steel
- Seal: Silicone
- Washers: NBR 70 (Nitrile Butadiene Rubber)

Body: The robust monoblock body is fabricated using 1.0 mm stainless steel. The flat roof option includes encapsulated mounting nutserts for concealed mounting. The sloped roof option consists of a sloped roof design that protrudes past pushbuttons and incorporates top and bottom external mounting flanges specifically designed for the mining industry.

Lid/Door: The robust pre-drilled lid/door is fabricated using 1.00mm stainless steel and is fastened using screws. The screws are provided with NBR 70 (Nitrile Butadiene Rubber) washers for use in harsh environments where hydrocarbons are present.

Holes: Ø 22.5mm or Ø 30.5mm.

Seal: A high quality Silicone seal.

Accessories: Wall Mounting Brackets. SKU: IP-HWMB (Set of 2) IP-304T-RMB, IP-304T-FMB, IP-SST-FMB & IP-SST-RMB.

Surface Finish: 0.4 micron Ra surface brushed finish.

FLAT ROOF

Part Number	Optional	Size	Description
Grade 316L	Grade 304	H x W x D	Hole & Columns
IP-SSP1	IP-304-P1	90 x 90 x 90	1 Hole
IP-SSP2	IP-304-P2	140 x 90 x 90	2 Hole
IP-SSP2X2	IP-304-P2X2	160 x 160 x 100	4 Hole (2 Columns of 2)
IP-SSP3	IP-304-P3	140 x 90 x 90	3 Hole
IP-SSP3X2	IP-304-P3X2	200 x 200 x 100	6 Hole (2 Columns of 3)
IP-SSP4	IP-304-P4	280 x 90 x 90	4 Hole
IP-SSP4X2	IP-304-P4X2	250 x 160 x 100	8 Hole (2 Columns of 4)



IP66-IP67 Terminal Boxes

Stainless Steel

SST

SCREWED LID | IP66, IP67



The IP Enclosures SST range of stainless steel terminal boxes are designed for use in the most demanding industrial environments.

Features & Specifications

SST

The IP Enclosures range of grade stainless steel terminal boxes are designed for use in the most demanding industrial environments.

Protection: IP66, IP67, IP69K, NEMA 4x. Optional: IECEx Ex eb IIC Gb (for gas), Ex tb IIIC Db (for dust)

Standards (& Conformities): UL508A, IEC60079



Material:

- Body: 1.0mm Grade 304 & 316L Stainless Steel.
- Lid/Door: 1.0mm Grade 304 & 316L Stainless Steel
- Seal: Silicone
- Washers: NBR 70 (Nitrile Butadiene Rubber); and optional Blue FDA is also provided loose

Body: The robust body is fabricated using 1.0mm Grade (304 and 316 available) Stainless Steel and incorporates a high-quality silicone seal.

Lid/Door: The robust pre-drilled lid/door is fabricated using 1.00mm. Grade 304 Stainless Steel and is fastened using screws. The screws are provided with NBR 70 (Nitrile Butadiene Rubber) washers for use in harsh environments where hydrocarbons are present.

Seal: A high quality silicone seal. The silicon seal is resistant to harsh chemicals.

Surface Finish: 0.2 micron Ra surface brushed finish.

Internal Plate: The inner plate is fabricated using 2.5mm sheet steel, supplied pre-fitted into the terminal box as standard.

Accessories: Wall Mounting Brackets. SKU: IP-HWMB (Set of 2)
IP-304T-RMB, IP-304T-FMB, IP-SST-FMB & IP-SST-RMB.

Part Number	Optional	Size
Grade 316L	Grade 304	HxWxD
IP-SST090909	IP-304-T090909	90 x 90 x 90
IP-SST140909	IP-304-T140909	140 x 90 x 90
IP-SST200909	IP-304-T200909	200 x 90 x 90
IP-SST280909	IP-304-T280909	280 x 90 x 90
IP-SST101010	IP-304-T101010	100 x 100 x 100
IP-SST161010	IP-304-T161010	160 x 100 x 100
IP-SST161610	IP-304-T161610	160 x 160 x 100
IP-SST251610	IP-304-T251610	250 x 160 x 100
IP-SST202010	IP-304-T202010	200 x 200 x 100
IP-SST202015	IP-304-T202015	200 x 200 x 150
IP-SST402012	IP-304-T402012	400 x 200 x 120
IP-SST403012	IP-304-T403012	400 x 300 x 120
IP-SST404012	IP-304-T404012	400 x 400 x 120



Thermal Control - Cooling

Air Conditioners

AC

350W TO 4KW | INDOOR & OUTDOOR



IP Enclosures air conditioners are designed for the cooling needs of electrical cabinets, optimised for door or side-panel mounting and have been designed for high efficiency and low maintenance. They are made in Italy and are SAA approved and certified for use in Australia.

350W Wall Mounted Air Conditioner		INDOOR	OUTDOOR
Part Number	SKU	IP-ACIWM035.003	IP-ACIWM035.003
Power supply	V/Hz	230V 1ph/50-60	
Dimensions HxWxD	mm	430x280x170	
Cooling capacity A35A35	W	350/370	
Cooling capacity A35A50	W	200/220	
Max current	A	1.8/1.9	
Delayed fuse	A	4	
Absorbed electric power A35A35	W	260/270	
Absorbed electric power A35A50	W	280/300	
Protection degree EN60529		IP54	IP55

850W Wall Mounted Air Conditioner		INDOOR	OUTDOOR
Part Number	SKU	IP-ACIWM085.003	IP-ACOWM085.003
Power supply	V/Hz	230V 1ph/50-60	
Dimensions HxWxD	mm	635x305x210	
Cooling capacity A35A35	W	850/900	
Cooling capacity A35A50	W	625/650	
Max current	A	2.65/2.75	
Delayed fuse	A	6	
Absorbed electric power A35A35	W	450/470	
Absorbed electric power A35A50	W	530/560	
Protection degree EN60529/1 enclosure side		IP54	IP55

1450W Wall Mounted Air Conditioner		INDOOR	OUTDOOR
Part Number	SKU	IP-ACIWM145.003	IP-ACOWM145.003
Power supply	V/Hz	230V 1ph/50-60	
Dimensions HxWxD	mm	800x400x240	
Cooling capacity A35A35	W	1450/1500	
Cooling capacity A35A50	W	1150/1200	
Max current	A	3.7/4.2	
Delayed fuse	A	6	
Absorbed electric power A35A35	W	650/700	
Absorbed electric power A35A50	W	770/850	
Protection degree EN60529		IP54	IP55

2000W Wall Mounted Air Conditioner		INDOOR	OUTDOOR
Part Number	SKU	IP-ACIWM200.003	IP-ACOWM200.003
Power supply	V/Hz	230V 1ph/50-60	
Dimensions HxWxD	mm	1000x400x240	
Cooling capacity A35A35	W	2000/2100	
Cooling capacity A35A50	W	1200/1250	
Max current	A	6.6/6.9	
Delayed fuse	A	10	
Absorbed electric power A35A35	W	1060/1100	
Absorbed electric power A35A50	W	1240/1300	
Protection degree EN60529		IP54	IP55

3000W Wall Mounted Air Conditioner		OUTDOOR
Part Number	SKU	IP-ACOWM300.433
Power supply	V/Hz	400V/3ph/50 - 460V/3ph/60
Dimensions HxWxD	mm	1500x400x255
Cooling capacity A35A35	W	2800/2950
Cooling capacity A35A50	W	2150/2330
Max current	A	2.2/2.6
Delayed fuse	A	16
Absorbed electric power A35A35	W	2090/2200
Absorbed electric power A35A50	W	2400/2550
Protection degree EN60529		IP54

Note: Air-Conditioner Flow Diverter & Assembly are also available upon request.

Thermal Control - Cooling

AC

Stainless Steel Grade 304 | Air Conditioners

350W TO 4KW | OUTDOOR



IP Enclosures stainless steel air conditioners are designed for the cooling needs of electrical cabinets, optimised for door or side-panel mounting and have been designed for high efficiency and low maintenance. They are made in Italy and are SAA approved and certified for use in Australia.

350W Wall Mounted Air Conditioner		OUTDOOR
Part Number	SKU	IP-ACOWM035.003.OX
Power supply	V/Hz	230V 1ph/50-60
Dimensions HxWxD	mm	430x280x170
Cooling capacity A35A35	W	350/370
Cooling capacity A35A50	W	200/220
Max current	A	1.8/1.9
Delayed fuse	A	4
Absorbed electric power A35A35	W	260/270
Absorbed electric power A35A50	W	280/300
Protection degree EN60529		IP55
850W Wall Mounted Air Conditioner		OUTDOOR
Part Number	SKU	IP-ACOWM085.003.OX
Power supply	V/Hz	230V 1ph/50-60
Dimensions HxWxD	mm	635x305x210
Cooling capacity A35A35	W	850/900
Cooling capacity A35A50	W	625/650
Max current	A	2.65/2.75
Delayed fuse	A	6
Absorbed electric power A35A35	W	450/470
Absorbed electric power A35A50	W	530/560
Protection degree EN60529		IP55
1450W Wall Mounted Air Conditioner		OUTDOOR
Part Number	SKU	IP-ACOWM145.003.OX
Power supply	V/Hz	230V 1ph/50-60
Dimensions HxWxD	mm	800x400x240
Cooling capacity A35A35	W	1450/1500
Cooling capacity A35A50	W	1150/1200
Max current	A	3.7/4.2
Delayed fuse	A	6
Absorbed electric power A35A35	W	650/700
Absorbed electric power A35A50	W	770/850
Protection degree EN60529		IP55
2000W Wall Mounted Air Conditioner		OUTDOOR
Part Number	SKU	IP-ACOWM200.003.OX
Power supply	V/Hz	230V 1ph/50-60
Dimensions HxWxD	mm	1000x400x240
Cooling capacity A35A35	W	2000/2100
Cooling capacity A35A50	W	1200/1250
Max current	A	6.6/6.9
Delayed fuse	A	10
Absorbed electric power A35A35	W	1060/1100
Absorbed electric power A35A50	W	1240/1300
Protection degree EN60529		IP55
3000W Wall Mounted Air Conditioner		OUTDOOR
Part Number	SKU	IP-ACOWM300.432.OX
Power supply	V/Hz	400V/3ph/50 - 460V/3ph/60
Dimensions HxWxD	mm	1500x400x255
Cooling capacity A35A35	W	2800/2950
Cooling capacity A35A50	W	2150/2330
Max current	A	2.2/2.6
Delayed fuse	A	16
Absorbed electric power A35A35	W	2090/2200
Absorbed electric power A35A50	W	2400/2550
Protection degree EN60529		IP55
4000W Wall Mounted Air Conditioner		OUTDOOR
Part Number	SKU	IP-ACOWM400.433.OX
Power supply	V/Hz	400V/3ph/50-460V/3ph/60
Dimensions HxWxD	mm	1500x400x255
Cooling capacity A35A35	W	3800/3980
Cooling capacity A35A50	W	2800/3160
Max current	A	2.7/3.0
Delayed fuse	A	16
Absorbed electric power A35A35	W	2200/2320
Absorbed electric power A35A50	W	2600/2750
Protection degree EN60529		IP55

Note: Air-Conditioner Flow Diverter & Assembly are also available upon request.

Thermal Control - Ventilation

Filter Vents & Fans

IP-V

12VDC TO 230VAC | 26M3/H TO 700M3/H | IP54 (IP55 OPTIONAL)



IP Enclosures range of filter fans and vents feature a modern Italian grille design with minimal external projection. The front-opening grille allows filters to be easily maintained from the outside of the enclosure.

Features & Specifications

IP-V

IP Enclosures provide a wide range of ventilation products for electrical enclosures. The front-opening grille allows filters to be easily maintained from the outside of the enclosure. All molded parts are made of highly resistant and self-extinguishing ABS. IP Enclosures ventilation products are manufactured to the highest quality in Italy.

STANDARD

Protection: IP54

Standards (& Conformities): EN60335-1, EN55014, EN6100-3-2, EN60529, Compliant to relevant Australian Standards, CE

Material: ABS, Self-extinguishing UL94V-0, RAL7035 Grey

Standard Filter: Self-extinguishing G3 synthetic fibre mat.

Flow Direction: Reversible



OUTDOOR UV Range

Protection: IP55

Standards (& Conformities): EN60335-1, EN55014, EN6100-3-2, EN60529, Compliant to relevant Australian Standards, CE

Material: Polycarbonate, UV Protection, RAL7035 Grey

High Efficiency Filter: Self-extinguishing G3-G4 synthetic fibre mat.

Flow Direction: Reversible

FEATURES

Modern Design: A positive visual impact is provided by the modern grille design and minimal external projection. All molded parts are made of highly resistant and self-extinguishing ABS, UL94 VO grade. The standard colour is RAL7035.

Easy Maintenance: Filter mats can be easily maintained from outside of the enclosure due to the front-opening grille. Replacement of soiled filter mats takes only a few seconds without the use of tools.

Wide Range of Air Flow Ratings: 26m³/h to 700m³/h

Optimal Enclosure Protection: The special configuration of the grille, foam seal gasket and filter mat ensures an IP54 protection of the enclosure.

Quick Electrical Connection: Fitted with spring terminals for faster and safer wiring. Default terminal position is above the fan but can be easily changed to bottom of fan to suit wiring needs without tools.

Reversible Fan: Default air flow direction is from outside to inside of the enclosure. If required, air flow can be reversed due to quick release fan lock system without the use of tools.

Fast Installation: Installation is fast due to the simple square cutout on the enclosure and the snap-in fixing system. No fasteners are required.

Vent Hoods: To obtain IP55 protection, use in conjunction with IP Enclosures vent hoods. Hinged vent hoods are available to provide operator access to easily maintain filters from the outside of the enclosure.



Easy Maintenance due to Front Opening Grille



Step 1: Open Grille



Step 2: Remove Filter



Step 1: Insert Filter



Step 2: Close Grille

350W Wall Mounted Air Conditioner		Vent	Outdoor UV Vent	230V Fan		115V Fan	12VDC Fan	24VDC Fan
Part Number	SKU	IP-V1000	IP-V1000-UV	IP-V1100	IP-V1100-UV	IP-V1101	IP-V1112	IP-V1124
Air flow rate (free blow)	m3/h	-	-	26 (30)				26
Air flow rate with exit filter	m3/h	-	-	15 (18)				15
Power supply	V/Hz	-	-	230 / 50-60		115 / 50-60	12DC	24DC
Dimensions HxWxD	mm	114x114x27		114x114x73			114x114x73	
Power consumption	W	-	-	13 (12)			3	4
Current consumption	A	-	-	0.10 (0.08)		0.14 (0.12)	0.25	0.16
Overcurrent protection	-	-	-	impedance				
Electrical connection	-	-	-	3-poles spring terminals*			2-poles spring terminals*	
Duty cycle	-	-	-	100%				
Operating temperature	-	-10 / +70 (+14/+158)						
Protection degree Class	-	IP54	IP55 / Class I	IP54 / Class I	IP55 / Class I		IP54 / Class I	
Noise level	dB(A)	-	-	30 (35)				35
Flow direction	-	-	-	reversible, default factory setting outside-in				
Bearing	-	-	-	ball				
Filter mat EN779	-	G2	G4	G2	G4		G2	
Cut-out Dimensions	mm	92x92		92x92		92x92		
Material	-	ABS UL94V-0 color RAL7035	Polycarbonate; Colour RAL7035	ABS UL94V-0 color RAL7035	Polycarbonate; Colour RAL7035	ABS UL94V-0 color RAL7035		
Replacement Filter Mat	-	IP-VF1	IP-VF1	IP-VF1		-	-	-
High Efficiency Filter Mat (G3)	-	IP-VF1X	IP-VF1X	IP-VF1X		-	-	-

150mm x 150mm 58m3/hr		Vent	Outdoor UV Vent	230V Fan		24VDC Fan	48VDC Fan	
Part Number	SKU	IP-V2000*	IP-V2000-UV	IP-V2200*	IP-V2200-UV	IP-V2224	IP-V2248	
Air flow rate (free blow)	m3/h	-	-	58(64)	44 (48)		58	
Air flow rate with exit filter	m3/h	-	-	43(48)	29 (32)		43	
Power supply	V/Hz	-	-	230 / 50-60		24DC	48DC	
Dimensions HxWxD	mm	150x150x37		150x150x86				
Power consumption	W	-	-	22 (21)		9	13	
Current consumption	A	-	-	0.14 (0.12)		0.37	0.27	
Overcurrent protection	-	-	-	impedance				
Electrical connection	-	-	-	3-poles spring terminals*			2-poles spring terminals	
Duty cycle	-	-	-	100%				
Operating temperature	°C (°F)	-10 / +70 (+14/+158)						
Protection degree Class	-	IP54	IP55 / Class I	IP54 / Class I	IP55 / Class I	IP54 / Class I		
Protection degree Class	dB(A)	-	-	43 (49)			45	
Flow direction	-	-	-	reversible, default factory setting outside-in				
Bearing	-	-	-	ball				
Filter mat EN779	-	G3	G4	G3	G4		G3	
Cut-out Dimensions	mm	124x124		124x124		124x124		
Material	-	ABS UL94V-0 color RAL7035*	Polycarbonate; Colour RAL703	ABS UL94V-0 color RAL7035*	Polycarbonate; Colour RAL703	ABS UL94V-0 color RAL7035*		
Replacement Filter Mat	-	IP-VF2	IP-VF2	IP-VF2		-	-	
High Efficiency Filter Mat (G4)	-	IP-VF2X	IP-VF2	IP-VF2X		-	-	

204mm x 204mm 115m3/hr		Vent	Outdoor UV Vent	230V Fan		24VDC Fan	48VDC Fan	
Part Number	SKU	IP-V3000*	IP-V3000-UV	IP-V3200	IP-V3200-UV	IP-V3224	IP-V3248	
Air flow rate (free blow)	m3/h	-	-	115 (125)	94 (102)		115	
Air flow rate with exit filter	m3/h	-	-	84 (97)	62 (71)		84	
Power supply	V/Hz	-	-	230 / 50-60		24DC	48DC	
Dimensions HxWxD	mm	204x204x37		204x204x104				
Power consumption	W	-	-	22 (21)		9	13	
Current consumption	A	-	-	0.14 (0.12)		0.37	0.27	
Overcurrent protection	-	-	-	impedance				
Electrical connection	-	-	-	3-poles spring terminals*			2-poles spring terminals*	
Duty cycle	-	-	-	100%				
Operating temperature	°C (°F)	-10 / +70 (+14/+158)						
Protection degree Class	-	IP54	IP55 / Class I	IP54 / Class I	IP55 / Class I	IP54 / Class I		
Protection degree Class	dB(A)	-	-	43 (49)			45	
Flow direction	-	-	-	reversible, default factory setting outside-in				
Bearing	-	-	-	ball				
Filter mat EN779	-	G3	G4	G3	G4		G3	
Cut-out Dimensions	mm	177x177		177x177		177x177		
Material	-	ABS UL94V-0 color RAL7035	Polycarbonate; Colour RAL7035	ABS UL94V-0 color RAL7035	Polycarbonate; Colour RAL7035	ABS UL94V-0 color RAL7035		
Replacement Filter Mat	-	IP-VF3	IP-VF3	IP-VF3		-	-	
High Efficiency Filter Mat (G4)	-	IP-VF3X	IP-VF3X	IP-VF3X		-	-	

Note: Filter Vents and Fans are also available in Black colour upon request.

250mm x 250mm 125m3/hr		Vent	Outdoor UV Vent	230V Fan		24VDC Fan	48VDC Fan
Part Number	SKU	IP-V4000*	IP-V4000-UV	IP-V4200	IP-V4200-UV	IP-V4224	IP-V4248
Air flow rate (free blow)	m3/h	-	-	125 (135)	110 (120)		125
Air flow rate with exit filter	m3/h	-	-	102(112)	90 (100)		102
Power supply	V/Hz	-	-	230 I 50-60		24DC	48DC
Dimensions HxWxD	mm	250x250x38		250x250x107			
Power consumption	W	-	-	22 (21)		9	13
Current consumption	A	-	-	0.14 (0.12)		0.37	0.27
Overcurrent protection	-	-	-	impedance			
Electrical connection	-	-	-	3-poles spring terminals*		2-poles spring terminals*	
Duty cycle	-	-	-	100%			
Operating temperature	°C (°F)	-10 / +70 (+14/+158)					
Protection degree I Class	-	IP54	IP55 / Class I			IP54 / Class I	
Protection degree I Class	dB(A)	-	-	43 (49)		45	
Flow direction	-	-	-	reversible, default factory setting outside-in			
Bearing	-	-	-	ball			
Filter mat EN779	-	G3	G4	G3	G4	G3	
Cut-out Dimensions	mm	224x224					
Material	-	ABS UL94V-0 color RAL7035	Polycarbonate; Colour RAL7035	ABS UL94V-0 color RAL7035	Polycarbonate; Colour RAL7035	ABS UL94V-0 color RAL7035	
Replacement Filter Mat	-	IP-VF4	IP-VF4	IP-VF4		-	-
High Efficiency Filter Mat (G4)	-	IP-VF4X	IP-VF4X	IP-VF4X		-	-

250mm x 250mm 255m3/hr to 410m3/hr		Vent	Outdoor UV Vent	230V		115V	24VDC	48VDC	230V	115V	400V
Part Number	SKU	IP-V4000	IP-V4000-UV	IP-V4300	IP-V4300-UV	IP-V4301	IP-V4324	IP-V4348	IP-V4400	IP-V4400-UV	IP-V4440
Air flow rate (free blow)	m3/h	-	-	255(290)	210 (240)	255(290)	25		410 (445)	340 (365)	410 (445)
Air flow rate with exit filter	m3/h	-	-	202(235)	166 (190)	202(235)	202		280 (302)	230 (250)	280 (302)
Power supply	V/Hz	-	-	230 I 50-60		115 / 50-60	24DC	48DC	230 / 50-60		115/50-60 / 400 / 50-60
Dimensions HxWxD	mm	250x250x38		250x250x107		250x250x136					
Power consumption	W	-	-	40 (38)		26	33	70 (90)		60 (70)	
Current consumption	A	-	-	0.17 (0.16)	0.34 (0.32)	1.08	0.68	0.40 (0.38)		0.80 (0.76)	0.18 (0.15)
Overcurrent protection	-	-	-	thermal			impedance		thermal		
Electrical connection	-	-	-	3-poles spring terminals*			2-poles spring terminals*		3-poles spring terminals*		4-p st*
Duty cycle	-	-	-	100%							
Operating temperature	°C (°F)	-10 / +70 (+14/+158)									
Protection degree I Class	-	IP54	IP55 / Class I	IP54 / Class I	IP55 / Class I	IP54 / Class I		IP55 / Class I	IP54 / Class I		
Protection degree I Class	dB(A)	-	-	53 (58)		61		65 (68)			
Flow direction	-	-	-	reversible, default factory setting outside-in							
Bearing	-	-	-	ball							
Filter mat EN779	-	G3	G4	G3	G4	G3		G4	G3		
Cut-out Dimensions	mm	224x224									
Material	-	ABS UL94V-0 color RAL7035	Polycarbonate; Colour RAL7035	ABS UL94V-0 color RAL7035	Polycarbonate; Colour RAL7035	ABS UL94V-0 color RAL7035			Polycarbonate; Colour RAL7035	ABS UL94V-0 color RAL7035	
Replacement Filter Mat	-	IP-VF4	IP-VF4	IP-VF4	IP-VF4	-	-	-	IP-VF4	-	-
High Efficiency Filter Mat (G4)	-	IP-VF4X	IP-VF4X	IP-VF4X	IP-VF4X	-	-	-	IP-VF4X	-	-

325mm x 325mm 550m3/hr to 700m3/hr		Vent	Outdoor UV Vent	230V Fan		230V Fan		115V Fan
Part Number	SKU	IP-V5000	IP-V5000-UV	IP-V5400	IP-V5400-UV	IP-V5500	IP-V5500-UV	IP-V5501
Air flow rate (free blow)	m3/h	-	-	550 (620)	440 (490)	700 (770)	595 (655)	700 (770)
Air flow rate with exit filter	m3/h	-	-	405 (450)	325 (360)	520 (575)	440 (490)	520 (575)
Power supply	V/Hz	-	-	230 I 50-60		230 / 50-60		115 / 50-60
Dimensions HxWxD	mm	325x325x42		325x325x140		325x325x154		
Power consumption	W	-	-	70 (90)		130 (180)		
Current consumption	A	-	-	0.40 (0.38)		0.55 (0.81)		1.10 (1.62)
Overcurrent protection	-	-	-	thermal				
Electrical connection	-	-	-	3-poles spring terminals*		3-poles spring terminals*		
Duty cycle	-	-	-	100%				
Operating temperature	°C (°F)	-10 / +70 (+14/+158)						
Protection degree I Class	-	IP54	IP55 / Class I	IP54 / Class I	IP55 / Class I	IP54 / Class I	IP55 / Class I	IP54 / Class I
Protection degree I Class	dB(A)	-	-	65 (68)		72 (73)		
Flow direction	-	-	-	reversible, default factory setting outside-in				
Bearing	-	-	-	ball				
Filter mat EN779	-	G3	G4	G3	G4	G3	G4	G3
Cut-out Dimensions	mm	291x291	291x291	291x291				
Material	-	ABS UL94V-0 color RAL7035	Polycarbonate; Colour RAL7035	ABS UL94V-0 color RAL7035	Polycarbonate; Colour RAL7035	ABS UL94V-0 color RAL7035	Polycarbonate; Colour RAL7035	ABS UL94V-0 color RAL7035
Replacement Filter Mat	-	IP-VF5	IP-VF5	IP-VF5		IP-VF5		-
High Efficiency Filter Mat (G4)	-	IP-VF5X	IP-VF5X	IP-VF5X		IP-VF5X		-

Note: Filter Vents and Fans are also available in Black colour upon request.

Thermal Control - Ventilation Roof Vents & Roof Fans

RV/RFV

230VAC | 600M3/H TO 1500M3/H | IP44, IP54

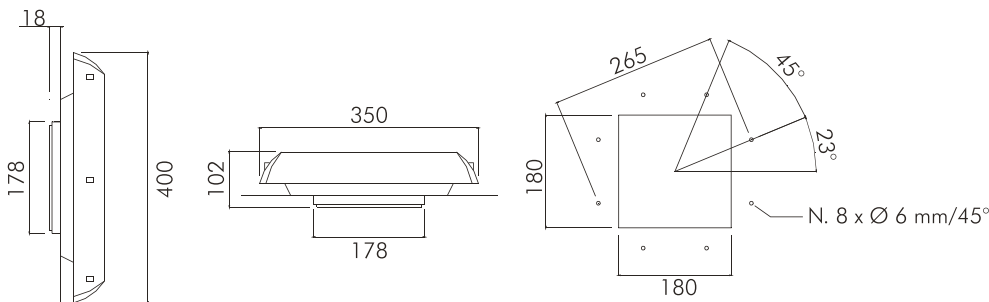
Features & Specifications

IP Enclosures provide a wide range of ventilation products for electrical enclosures. All molded parts are made of highly resistant and self-extinguishing ABS. IP Enclosures ventilation products are manufactured to the highest quality in Italy.

Protection: IP44

Standards (& Conformities): 

Material: ABS UL94V-0 color RAL7035 | Steel Color RAL7035



		Roof Vent	600m3 Fan	800m3 Fan	1000m3 Fan	Roof Vent	1500m3 Fan
Features	Unit	IP-RV1	IP-RFV1	IP-RFV2	IP-RFV3	IP-RV4	IP-RFV4
Air flow rate (free blow)	m3/h	-	600/(625)	860/(950)	1000/(1050)	-	1500/(1550)
Flow rate with filter fan	m3/h	-	430/(450)	580/(640)	700/(720)	-	900/(950)
Power supply	V/Hz	-	230-50/60	230-50/60	230-50/60	-	230-50/60
Dimensions HxWxD	mm	400x350x102				540x390x150	
Power consumption	W	-	70/(90)	85/(115)	120/(170)	-	160/(215)
Current consumption	A	-	0.32/(0.40)	0.43/(0.50)	0.50/(0.75)	-	0.70/(0.98)
Overcurrent protection	-	-	thermal			-	thermal
Electric connection	-	-	4-pole terminal 2.5 mm ²				4-pole terminal 2.5 mm ²
Duty cycle	-	-	100%			-	100%
Operating temperature	°C(°F)	-10/+70 (+14/+158)				-20/+50 (-4/+22)	-10/+70 (+14/+158)
Protection degree enclosure side	-	IP44					
Protection class	-	-	Class I			-	Class I
Noise level	dB(A)	-	64(65)	72(73)	72(73)	-	74(75)
Flow direction	-	-	inside-out			-	inside-out
Bearing	-	-	ball			-	ball
Service life (at 40°C)	hr	-	50.000			-	50.000
Material	-	ABS UL94V-0 Color RAL7035				Steel Color RAL7035	
Gasket	-	Self Adhesive				PVC	
Weight (with packaging)	kg	2.30(2.50)	3.65(3.85)	4.00(4.20)	4.75(4.95)	5.2(5.5)	11.3(12.3)
Package dimensions	mm	410x360x130				550x400x140	
Mounting	-	Screws					
Conformity/Certifications	-	CE					

Thermal Control - Heat Exchangers

Air/Air Heat Exchangers

HEX

IP Enclosures heat exchangers are designed for the cooling needs of electrical cabinets. By utilising the heat exchange between two separate air flows through an aluminium pack, air/air heat exchangers allow heat to be dissipated inside electrical panels. They are recommended if the outside air has a lower temperature value than the inside air, a low cooling capacity is required, if the ambient air is excessively oily or dusty, or if the outside air and humidity cannot enter the cabinet.

Features and Specifications

- Installation: internal/external
- Heat exchange core made of aluminium, to ensure high efficiency with compact dimensions
- Specific heat transmission 16-85 W/K

Features	Unit	IP-HEX16	IP-HEX35	IP-HEX50	IP-HEX80
Specific Heat Transmission	W/K	16	35	50	80
Power Supply	V/Ph/Hz	230/1/50-60	-	-	-
Current Consumption	A	0.46/0.58	0.46/0.58	0.46/0.58	0.72/0.96
Absorbed Fan Power	W/K	64	100/130	100/130	160/200
Side Cabinet Fan Flow (Free Blowing)	m3/hr	136	575	575	860
Internal Operating Temp	°C	-5/+55	-	-	-
Ambient Temperature Limit	°C	-5/+55	-	-	-
Internal Circuit Protection Degree	IP	IP54	IP55	IP55	IP55
Noise Level	dB (A)	58	76	76	76
Installation	-	Internal/External	-	-	-
Dimensions (HxWxD)	mm	410 x 204 x 109	780 x 254 x 90	780 x 312 x 90	1250 x 311 x 108
Weight	kg	4.6	7.5	9.5	20
Conformity	-	CE	-	-	-




Thermal Control - Controllers

Thermostats, Hygrostat & Fan Speed Controller

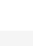
IP Enclosures thermal control products are manufactured to the highest quality in Italy and are suitable for use with IP Enclosures range of heating and cooling products.

Single Thermostats | NC/NO

Feature	Unit	IP-THNC1	IP-THNC2	IP-THNC3	IP-THNO1	IP-THNO2	IP-THNO3
Contact function	-	NC	NC	NC	NO	NO	NO
Temperature setting range	°C	-10/+50	0/+60	+20/+80	-10/+50	0/+60	+20/+80
Precision	°C	±4					
Hysteresis	°C	7					
Max switching current	-						
250Vac resistive load (inductive load)	A	10 (1.6)					
125Vac resistive load (inductive load)	A	15 (2.5)					
Max. switching power in Vdc	W	30					
Temperature sensor type	-	Thermostatic bimetal					
Contact type	-	Snap action					
Contact resistance	mOhm	< 10					
Service life	cycles	> 100 000					
Electrical connections	-	2-pole terminal for 2.5 mm ² wire					
Casing	-	PA6, UL94 V0 self-extinguishing, light grey RAL 7035					
Protection degree EN60529	-	IP20					
Operating temperature	°C (°F)	-25/+80 (-13/+176)					
Storage temperature	°C (°F)	-45/+80 (-49/+176)					
Mounting	-	Clip for mounting on DIN rail 35 mm EN50022					
Installation position	-	Variable					
Conformity/Certifications	-	CE-UL [®]  us					
Dimensions HxWxD	mm	61x34x35					
Weight (with Packaging)	Kg	0.048 (0.055)					



Double Thermostats | NC/NO

Feature	Unit	IP-THD1	IP-THD2	IP-THD3
Contact function	-	NC	NO	NO
Temperature setting range	°C	-10/+50	+20/+80	0/+60
Precision	°C	±4		
Hysteresis	°C	7		
Max switching current	-			
250Vac resistive load (inductive load)	A	10 (1.6)		
125Vac resistive load (inductive load)	A	15 (2.5)		
Max. switching power in Vdc	W	30		
Temperature sensor type	-	Thermostatic bimetal		
Contact type	-	Snap action		
Contact resistance	mOhm	< 10		
Service life	cycles	> 100 000		
Electrical connections	-	2-pole terminal for 2.5 mm ² wire		
Casing	-	PA6, UL94 V0 self-extinguishing, light grey RAL 7035		
Protection degree EN60529	-	IP20		
Operating temperature	°C (°F)	-25/+80 (-13/+176)		
Storage temperature	°C (°F)	-45/+80 (-49/+176)		
Mounting	-	Clip for mounting on DIN rail 35 mm EN50022		
Installation position	-	Variable		
Conformity/Certifications	-	CE-UL [®]  us File n. E348803		
Dimensions HxWxD	mm	61x53x35		
Weight (with Packaging)	Kg	0.080 (0.090)		



Mechanical Hygrostat

Feature	Unit	IP-MH1
Relative Humidity setting range	RH%	20-90
Relative Humidity Hysteresis	RH%	5 (max 10)
Precision	RH%	±4
Operating temperature	°C (°F)	-10/+50 (+14/+122)
Weight (with Packaging)	Kg	0.15 (0.17)

Fan Speed Controller (Image not shown)

Feature	Unit	IP-FSC1
Power supply	V/Hz	100-230/50-60
Temperature setting range	°C	+20/+60
Fan speed setting range	%	0-100
Speed controller	-	partialization of wave
Input	-	NTC sensor
Max. output fan	-	300 W (100-230/50-60Hz)
Electrical connection	-	terminal for 2.5 mm ² wire
Optical signal	-	LED
Casing	-	PA6, UL94 V0 self-extinguishing, light grey RAL 7035
Protection degree EN60529	-	IP20
Weight (with Packaging)	Kg	0.11 (0.12)




Thermal Control - Heating Anti-Condensation Heaters

IP-H

COMPACT, TOUCH SHIELD & FAN-ASSISTED | 50W TO 750W


IP Enclosures provide a range of heating products for electrical enclosures. Our range of heating products are manufactured to the highest quality in Italy.

Compact | 50W to 150W

Feature	Unit	IP-H25	IP-H50	IP-H75	IP-H100	IP-H150
Heating Capacity*	W	25	50	75	100	150
Power supply	V	120-240V AC or DC				
24V Voltage Availability	V	IP-H50.24			IP-H100.24	
48V Voltage Availability	V	IP-H100.48				
Inrush current	A	2.5	3.5	4	5	9.5
Delayed fuse (advised)	A	4		6.3	8	10
Electrical connections	-	2 screw terminals for stranded or rigid wire 2.5 mm ²				
Protection Class	-	Class II				
Protection degree EN60529	-	IP20				
Operating temperature	°C (°F)	-45/+70 (-49/+158)				
Storage temperature	°C (°F)	-45/+80 (-49/+176)				
Dimensions HxWxD	mm	128x61x59	110x61x59	140x61x59		220x61x59
Weight (with packaging)	kg	0.25 (0.28)	0.25 (0.28)	0.32 (0.36)		0.57 (0.62)
Conformity/Certifications	-	CE-UL c  us File n. E301228				
VERSIONS						
with integrated fixed thermostat NC 5 °C		IP-H25.001	IP-H50.001	IP-H75.001	IP-H100.001	IP-H150.001

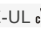


Fan Assisted | 250W to 750W

Feature	Unit	IP-FH250	IP-FH400	IP-FH500	IP-FH750
Heating Capacity*	W	250	400	500	750
Power supply	V Hz	230V 50/60Hz			
Max. Current	A	1.2	1.9	2.4	3.6
Heating Element Type	-	Resistor			
Thermal Protection	-	Thermal cut out fuse in case of fan failure			
Radiator	-	Extruded aluminium profile; anodized			
Axial Fan	-	Ball bearing; service life 50,000 hrs at 25°C (77°F), Air flow rate 44m ³ /h; Free flow			
Signalling	-	Green LED power ON			
Electrical Connections	-	3 screw terminals for stranded or rigid wire 2.5 mm ²			
Protection Class	-	Class I, earthed			
Protection Degree EN60529	-	IP20			
Operating Temperature	°C (°F)	-25 / +70 (-13 / +158)			
Storage Temperature	°C (°F)	-45 / +80 (-49 / +176)			
Mounting	-	Clip for mounting on DIN rail 35 mm EN50022			
Installation Position	-	Best efficiency in vertical position			
Dimensions HxWxD	mm	135H x 82W x 112D	165H x 82W x 112D	165H x 82W x 112D	225H x 82W x 112D
Weight (With Packaging)	Kg	0.88 (0.94)	0.97 (1.04)	0.97 (1.04)	1.35 (1.42)
Conformity/Certifications	-	CE-UL c  us File n. E301228			



Fan Assisted (Small Footprint) | 150W to 400W

Feature	Unit	IP-TMX150	IP-TMX200.24	IP-TMX250	IP-TMX300	IP-TMX400	IP-TMX500	IP-TMX600
Heating Capacity*	W	150	200	250	300	400	500	600
Power supply	V	230V 50/60Hz		24V DC		230V 50/60Hz		
Delayed Fuse (Advised)	A	6.3		-		6.3		
Heating Element Type	-	PTC Radiator						
Electrical Connections	-	Spring terminals						
Protection Class	-	Class II						
Protection Degree EN60529	-	IP20						
Operating Temperature	°C (°F)	-40 / +70 (-40 / +158)						
Storage Temperature	°C (°F)	-40 / +70 (-40 / +158)						
Axial Fan	-	Ball bearing, service life 50,000 hrs at 25°C (77°F), Air flow rate 45m ³ /h, free blow						
Mounting	-	Clip for mounting on DIN rail 35 mm EN50022						
Installation Position	-	Best efficiency in vertical position						
Dimensions HxWxD	mm	89H x 67W x 99D						
Weight (With Packaging)	Kg	0.36 (0.4)						
Conformity / Certification	-	CE-UL c  us File n. E301228						
*at 10°C (50°F) ambient temperature								



Accessories

Louvre Vents, Vent Hoods & Sun Shields

LOUVRE VENTS

STEEL

Part Number	Size	Part Number Suffix		
Standard	H x W (mm)	Optional Colours		
IP-PSLV10075	100 x 75	-	-	-
IP-PSLV130130	130 x 130	-	-BLK	-RED
IP-PSLV250250	250 x 250	-GRN	-BLK	-RED

STAINLESS STEEL

Part Number	Size
Standard	H x W (mm)
IP-PSLV10075	100 x 75
IP-PSLV130130	130 x 130
IP-PSLV250250	250 x 250



VENT HOODS

STEEL

STAINLESS STEEL

Part Number		Part Number		To Suit Fan/ Vent	Size	Part Number Suffix		
Standard	Hinged	Standard	Hinged	Size	H x W x D (mm)	Optional Colours (Steel)		
IP-PSVH2517	IP-PSVH2517-H	IP-SSVH2517	IP-SSVH2517-H	IP-V1XXX	250 x 175 x 50	-GRN	-BLK	-RED
IP-PSVH3020	-	IP-SSVH3020	-	IP-V1XXX	300 x 200 x 50	-	-	-
IP-PSVH3222	IP-PSVH3222-H	IP-SSVH3222	IP-SSVH3222-H	Up to IPV2XXX	320 x 220 x 50	-	-BLK	-RED
IP-PSVH4030	IP-PSVH4030-H	IP-SSVH4030	IP-SSVH4030-H	Up to IPV3XXX	400 x 300 x 50	-	-	-
IP-PSVH4737	IP-PSVH4737-H	IP-SSVH4737	IP-SSVH4737-H	Up to IPV4XXX	475 x 375 x 75	-	-	-
IP-PSVH5040	IP-PSVH5040-H	IP-SSVH5040	IP-SSVH5040-H	Up to IPV5XXX	500 x 400 x 75	-GRN	-BLK	-



IP Rating: IP55. Item marked with "" is IP56. (When used with IP Enclosures fans & filters)

VENTILATED ROOFS

STEEL

ALUMINIUM

Part Number	Part Number	Size
Standard	Standard	W x D (mm)
IP-VR6040	IP-AVR6040	600 x 400
IP-VR8040	IP-AVR8040	800 x 400
IP-VR10040	IP-AVR10040	1000 x 400



Accessories

Locks and Swing Handles

Our electrical enclosures are supplied fitted with standard locks. However, to provide maximum flexibility, IP Enclosures also provide a full range of electrical enclosure locks, handles and high security access control solutions.



Quarter Turn
IP-L001-5mm Double Bit
IP-L026-5mm Double Bit
Stainless Steel
IP-L027-8mm Square 316
Stainless Steel



IP69K Hygiene
IP-L030 - 316 Stainless
Steel



Wing Knob Padlockable
IP-L043 - Cast Alloy
Coated Black
IP-L031 - 316 Stainless
Steel



T Handle
IP-L044 - Cast Alloy
IP-L052 - 316 Stainless
Steel



Quarter Turn Lock Keyed
IP-L047 - Chrome



L Handle Keyed (Keyed Alike)
IP-L057 - Cast Alloy



Keys
IP-L004 – 5mm Double Bit
Chrome
IP-L005 – 8mm Square
Chrome



Wing Knob
IP-L029 - 316 Stainless
Steel



Wing Knob Keyed (Keyed Alike)
IP-L045 - Cast Alloy
Coated Black
IP-L028 - 316 Stainless
Steel



T Handle Keyed (Keyed Alike)
IP-L048 - Cast Alloy
IP-L049 - Cast Alloy
Coated Black
IP-L053 - 316 Stainless Steel



Swing Handle
IP-L006 – Polyamide Coated
Black



3 Point Swing Handle*
IP-L036 – with 3mm Double
Bit Barrel



3 Point Swing Handle Padlockable*
IP-L014 - Polyamide & Cast
Alloy Coated Black



3 Point Swing Handle Padlockable*
IP-L076 - Cast Alloy Coated
Black



3 Point Swing Handle*
IP-L046 – Polyamide Swing
Handle with 5mm
Double Bit Barrel



3 Point Swing Handle*
IP-L075 – Cast Alloy Coated
Black



3 Point Stainless Steel Swing Handle*
IP-L035 – 316 Stainless Steel



3 Point Stainless Steel Swing Handle Padlockable*
IP-L039 – 316 Stainless Steel

*Note: Items marked * are also suitable for 4 point*

Accessories

LED

LED Surface Mounted Luminaires

24V DC

IP Enclosures provide high quality LED Surface Mounted Luminaires for electrical enclosures.

Features:

- Bright LED luminaire
- 24V DC
- Polycarbonate shatterproof cover
- Integrated Switch or Sensor
- Magnet Mount or Screw Mount
- String two units together to increase width and output.
- Made in Italy



SKU	Voltage	Dimensions Ø x L (mm)	Lamp luminous flux	Switch	Mount
IP-LEDLAMP3200-24VDC	24VDC	Ø 32 x 345	650	On/Off Switch	Screw Mount
IP-LEDLAMP3201-24VDC	24VDC	Ø 32 x 345	650	On/Off Switch	Magnet Mount
IP-LEDLAMP3210-24VDC	24VDC	Ø 32 x 345	650	Motion Sensor	Screw Mount
IP-LEDLAMP3211-24VDC	24VDC	Ø 32 x 345	650	Motion Sensor	Magnet Mount

Features:

- Very bright LED luminaire
- 24V DC
- Homogenous, uniform, & flicker-free illumination
- Slim, almost non-protruding LED luminaire; 25 mm high
- Clear cover; polycarbonate-material; shatterproof
- Available in clear cover glare suppression
- Quick installation (single solution/electrically interlinkable; cascadable)
- Robust aluminium housing for heat dissipation
- Made in Germany



Features	Unit	IP-LED03-24VDC
Power Supply	V	24V DC
Luminosity	Lm	145 Lm/W
Lamp luminous flux	Lm	1260 Lm
Lamp type	-	LED Surface-mounted Luminaire
Illuminant	-	SMD LED
Light distribution	-	Direct
Light colour	-	Daylight white (5200-5700K)
Beam angle (optics)	-	120°
Colour rendering	Ra	>85
Power consumption	W	~8 W
Service life	hr	> 60,000 h
Electrical connection	-	M12 A-type encoded
Housing material	-	Aluminium
Cover material	-	Polycarbonate; clear; shatterproof
Protection degree/Class	-	IP54 / Class III
Operating temperature	°C (°F)	-10...+60 °C
Mounting	-	Swivel / Planar mounting
Installation	-	Electrical Interlinked
Dimensions	mm	350(L) x 26(W) x 31(H)
Net weight	kg	0.30
Gross weight	kg	0.45
Conformity/Certifications	-	CE; ETL Listed

Degrees Of Protection - IP Ratings

Australian Standard IEC/EN/AS60529 - Degrees of protection by enclosures (IP Code)

IEC/EN/AS60529 provides definitions for degrees of protection provided by enclosures of electrical equipment, with regard to protection of persons against access to hazardous parts inside the enclosure and protection of the equipment inside the enclosure against ingress of solid foreign objects and harmful effects due to the ingress of water.

IP X X

IP CODE

Ingress Protection

FIRST NUMERAL

Degrees of protection against access to hazardous parts and against solid foreign objects

SECOND NUMERAL

Degrees of protection against ingress of water

FIRST NUMERAL - Protection against solids/dust

- IP0X** - No protection
- IP1X** - Protection against solid objects > 50 mm
- IP2X** - Protection against solid objects > 12 mm
- IP3X** - Protection against solid objects > 2.5 mm
- IP4X** - Protection against solid objects > 1 mm
- IP5X** - Protection against dust (limited ingress allowed, no harmful deposit)
- IP6X** - Fully protected from dust (dust tight)

SECOND NUMERAL - Protection against water

- IPX0** - No protection
- IPX1** - Protection from vertically dripping water
- IPX2** - Protection from sprays/dripping of water up to 15° from vertical
- IPX3** - Protection from spraying water up to 60° from vertical
- IPX4** - Protection from spraying water (all directions) - limited ingress acceptable if no hazard
- IPX5** - Protection from low pressure jets of water (all directions) - limited ingress acceptable if no hazard
- IPX6** - Protection against powerful jets of water, limited ingress acceptable if no hazard
- IPX7** - Protection from temporary immersion
- IPX8** - Protection from continuous immersion
- IPX9K** - Protection from high pressure and temperature water jet (ISO 20653)

Colour Options

COLOUR CHART

Standard colours are shown in the colour chart below. All enclosures are supplied as RAL7035 Light Grey unless requested otherwise. Refer to tables for part number suffix. Other RAL colours available upon request.



Protection in the toughest conditions™

Global Reach - Local Support

IP Enclosures operates across four continents with sales, warehousing and technical support centres in:

Australia: Head Office & Manufacturing Design Centre

United Kingdom: European Distribution & Support

New Zealand: Regional Logistics Hub

Continental Europe: Strategic Partner Manufacturing

Our products are stocked and supported by authorised distributors worldwide, ensuring rapid supply and consistent technical guidance.

Digital resources, drawings, CAD models, datasheets and thermal tools are available online 24/7 to assist engineers and system integrators globally.

Wherever you build, we protect.

IP ENCLOSURES UK

Company Number 13 240 421

Address: Unit 11, Sherwood Road, Bromsgrove, Worcestershire
B60 3DR, UNITED KINGDOM

sales@ipenclosures.co.uk | www.ipenclosures.co.uk

T: 01527 433383

