

IP66 19" Data Racks

IP-SD1606080

STEEL | SINGLE DOOR | IP66

19" 32U - 1600H x 600W x 800D

IP Enclosures SD range of IP66 19" data racks are designed for outdoor applications to house sensitive data network equipment in harsh environments.

Protection: Complies with IP66 IK10

Standard: IEC/EN/AS60529, IEA-310-D, RoHS  

Rack Unit Size: 32U

Material:

- Enclosure Body: 1.5mm galvanised steel sheet
- Enclosure Door: 1.5mm galvanised steel sheet
- 19" Data Rack Rails: 1.5mm galvanised steel sheet
- Enclosure Seal: Polyurethane

Body: The robust monoblock body is 1.5mm galvanised steel sheet. Flat face sealing surfaces increase seal life. A gland plate is also incorporated into the bottom face.

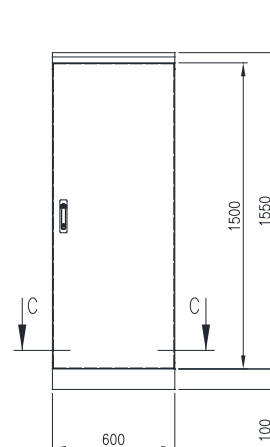
Door: The surface mounted door is 1.5mm galvanised steel sheet. It incorporates concealed removable hinges with captive pins. Doors are also designed for a 110° opening.

Door Seal: A high quality full perimeter seal provides excellent sealing over a long life. It is machine-applied Polyurethane foamed in place (FIP).

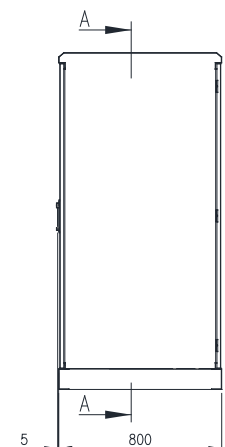
Lock: 3 point locking system with key-lock swing handle. A full range of locking solutions are available upon request.

Gland Plate: Gland plates with seals are incorporated into the bottom face of the enclosure for cable management.

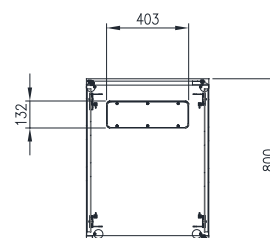
Surface Treatment: UL approved epoxy polyester powder-coated with a textured finish. 80-120 micron average thickness. Standard Colour: RAL7035 Grey.



FRONT VIEW



SIDE VIEW



SECTION C-C

