

Electrical Enclosure Accessories IP-WINDOOR-P

STEEL | TRANSPARENT DOORS | POLYCARBONATE | IP66

IP Enclosures offer steel transparent glazed doors engineered for compatibility with its range of electrical enclosures. Supplied as a standard accessory, transparent doors allow quick replacement by removing the existing door. The doors incorporate a transparent viewing window panel manufactured from polycarbonate material and are exclusively sold and available in the UK region to ensure compliance with applicable UK electronics and electrical standards.

Protection: IP66

Standard: IEC/EN 60529, RoHS



Material:

- Enclosure Door: 1.5mm galvanised steel sheet
- Viewing Window Panel: 4.0mm Polycarbonate
- Enclosure Seal: Polyurethane

Door: The surface mounted door is made from 1.5mm galvanised steel sheet. It incorporates concealed, removable hinges with captive pins and is designed for a 110° opening.

Viewing Window Panel: The viewing window panel is made from 4.0mm thick Polycarbonate.

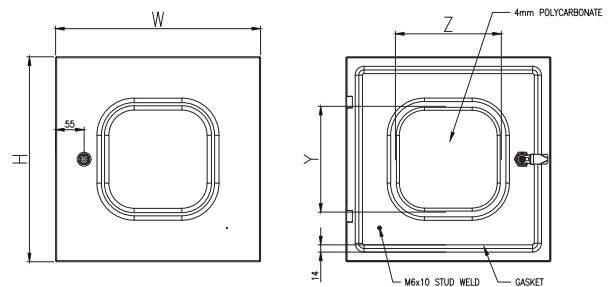
Seal: A high quality full perimeter seal provides excellent sealing over a long life. It is machine applied Polyurethane foamed in place (FIP).

Lock: 5mm Double Bit Quarter Turn Lock. A full range of locking solutions are available upon request.

Surface Treatment: UL approved AkzoNobel epoxy polyester powder coated with a textured finish. 80-120 micron average thickness. Colour RAL7035 Light Grey (standard electrical enclosure).



Image shown is for reference only. See table below for the accurate sizes and specifications.



NOTE: 2D drawing is for reference only. See CAD files for sizes and specifications.

| Part Number | Enclosure Door Size | Viewing Panel Size | Weight | Lock |
|-------------------|---------------------|--------------------|---------------|---------------|
| SKU | H x W (mm) | Y x Z (mm) | Kilogram (Kg) | Quantity (pc) |
| IP-4030WINDOOR-P | 395H x 295W | 204 x 134 | 2 | 1 |
| IP-4040WINDOOR-P | 395H x 395W | 204 x 204 | 3 | 1 |
| IP-4060WINDOOR-P | 395H x 595W | 204 x 404 | 4 | 1 |
| IP-5030WINDOOR-P | 495H x 295W | 304 x 134 | 2 | 1 |
| IP-5040WINDOOR-P | 495H x 395W | 304 x 204 | 3 | 1 |
| IP-5050WINDOOR-P | 495H x 495W | 304 x 304 | 3 | 1 |
| IP-6040WINDOOR-P | 595H x 395W | 404 x 204 | 4 | 2 |
| IP-6060WINDOOR-P | 595H x 595W | 404 x 404 | 5 | 2 |
| IP-7050WINDOOR-P | 695H x 495W | 504 x 304 | 5 | 2 |
| IP-8040WINDOOR-P | 795H x 395W | 604 x 204 | 5 | 2 |
| IP-8060WINDOOR-P | 795H x 595W | 604 x 404 | 7 | 2 |
| IP-8080WINDOOR-P | 795H x 795W | 604 x 604 | 8 | 2 |
| IP-10060WINDOOR-P | 995H x 595W | 804 x 404 | 8 | 2 |
| IP-10080WINDOOR-P | 995H x 795W | 804 x 604 | 10 | 2 |
| IP-12060WINDOOR-P | 1195H x 595W | 1004 x 404 | 9 | 2 |
| IP-12080WINDOOR-P | 1195H x 795W | 1004 x 604 | 12 | 2 |