

# Electrical Enclosure Accessories IP-WINDOOR-P

STEEL | TRANSPARENT DOORS | POLYCARBONATE | IP66

IP Enclosures offer steel transparent glazed doors engineered for compatibility with its range of electrical enclosures. Supplied as a standard accessory, transparent doors allow quick replacement by removing the existing door. The doors incorporate a transparent viewing window panel manufactured from polycarbonate material and are exclusively sold and available in the UK region to ensure compliance with applicable UK electronics and electrical standards.

**Protection:** IP66

**Standard:** IEC/EN 60529, RoHS



**Material:**

- Enclosure Door: 1.5mm galvanised steel sheet
- Viewing Window Panel: 4.0mm Polycarbonate
- Enclosure Seal: Polyurethane

**Door:** The surface mounted door is made from 1.5mm galvanised steel sheet. It incorporates concealed, removable hinges with captive pins and is designed for a 110° opening.

**Viewing Window Panel:** The viewing window panel is made from 4.0mm thick Polycarbonate.

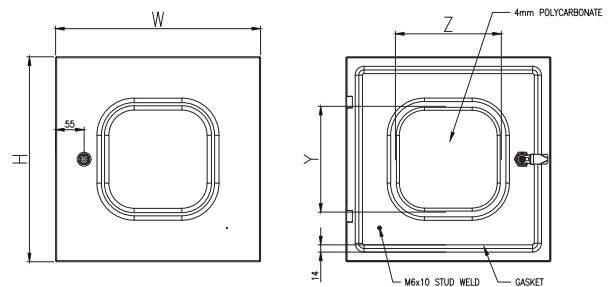
**Seal:** A high quality full perimeter seal provides excellent sealing over a long life. It is machine applied Polyurethane foamed in place (FIP).

**Lock:** 5mm Double Bit Quarter Turn Lock. A full range of locking solutions are available upon request.

**Surface Treatment:** UL approved AkzoNobel epoxy polyester powder coated with a textured finish. 80-120 micron average thickness. Colour RAL7035 Light Grey (standard electrical enclosure).



Image shown is for reference only. See table below for the accurate sizes and specifications.



NOTE: 2D drawing is for reference only. See CAD files for sizes and specifications.

Part Number	Enclosure Door Size	Viewing Panel Size	Weight	Lock
SKU	H x W (mm)	Y x Z (mm)	Kilogram (Kg)	Quantity (pc)
IP-4030WINDOOR-P	395H x 295W	204 x 134	2	1
IP-4040WINDOOR-P	395H x 395W	204 x 204	3	1
IP-4060WINDOOR-P	395H x 595W	204 x 404	4	1
IP-5030WINDOOR-P	495H x 295W	304 x 134	2	1
IP-5040WINDOOR-P	495H x 395W	304 x 204	3	1
IP-5050WINDOOR-P	495H x 495W	304 x 304	3	1
IP-6040WINDOOR-P	595H x 395W	404 x 204	4	2
IP-6060WINDOOR-P	595H x 595W	404 x 404	5	2
IP-7050WINDOOR-P	695H x 495W	504 x 304	5	2
IP-8040WINDOOR-P	795H x 395W	604 x 204	5	2
IP-8060WINDOOR-P	795H x 595W	604 x 404	7	2
IP-8080WINDOOR-P	795H x 795W	604 x 604	8	2
IP-10060WINDOOR-P	995H x 595W	804 x 404	8	2
IP-10080WINDOOR-P	995H x 795W	804 x 604	10	2
IP-12060WINDOOR-P	1195H x 595W	1004 x 404	9	2
IP-12080WINDOOR-P	1195H x 795W	1004 x 604	12	2